



UNIVERSITY
OF LATVIA

ATEE 2022 Annual Conference

AUGUST 29-31, Riga, Latvia

USEFUL INFORMATION

Overall information about the transport

Trips to and from Riga International Airport

We suggest you take bus number **22, “Lidosta –Rīga”** to get from Riga International Airport to the city centre.

The public transport stop is 300 metres from the Arrivals Terminal, immediately beyond the car park.

Follow the Public Transport signs!

If you prefer taxi services, they are located immediately at the exit of the Arrivals Terminal. (Fares of different taxi companies may greatly differ, and there is no maximum limit, therefore, we recommend that you clarify the price of the ride before hiring).

More information is available here:
<https://airport-transport.lv/en/>

An E-ticket must be purchased before boarding a bus or other public transport.



1. It can be bought at small "**Narvesen**" kiosks on the streets of Riga, in the Riga International Airport (at the exit of departure hall E on the 1st floor and in the check-in hall on the 2nd floor), and at a ticket vending machine at the bus stop.

2. It looks like a yellow cardboard card (as seen in the picture)

3. Choose a **24-hour ticket** for all routes. It will cost 5.00 EUR and will be the most advantageous option (see other options [here](#))

4. If the salesperson doesn't understand what you're saying in English, please show them the next slide.

5. The ticket can also be purchased online on the "Rīgas satiksme" mobile application. Learn more [here](#).





Show this text to a salesperson to
buy a 24-hour ticket at the kiosk

Labdien!
Man, lūdzu, vienu 24 stundu
biļeti visiem transportiem.
Paldies!

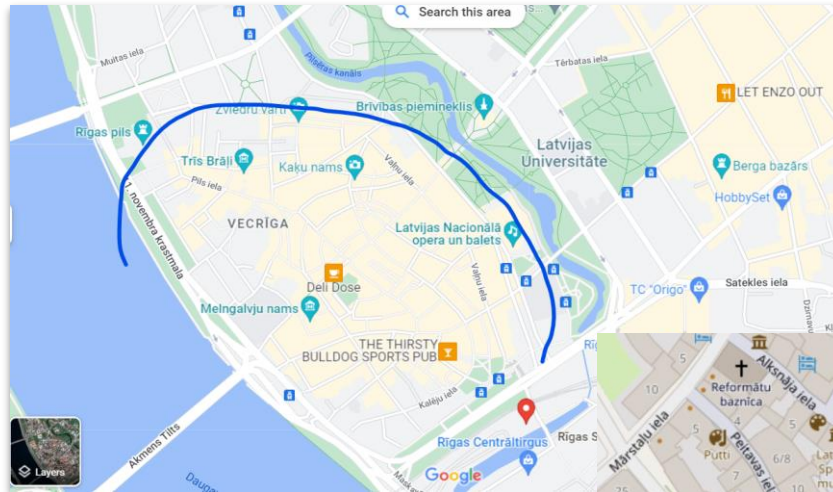
Hello!
Please one 24-hour ticket for all routes.
Thank you!

Getting to the ATEE Conference venue - if you are staying at a hotel in the Old Town (Old Riga)

Go to the bus stop called
"13. janvāra iela" located
here (see a yellow mark on
the map)

and look for the bus
number **"23"** on the **blue**
stop signs

(Time options available on the
next slide)



Bus number 23 (bus stop “13.janvāra iela”)

Name of the
bus stop

The link is available [here](#)

23

Abrenes iela - Baloži

Abrenes iela

Elizabetes iela

13.janvāra iela

Nacionālā bibliotēka

LU Akadēmiskais centrs

2.trolejbusu parks

Bieķensalas iela

Satiksmes iela

Koku iela

Skaistkalnes iela

Stērstu iela/CSD

Ziepniekkalna iela

Doles iela

Bišumuiža

Jāņa Čakstes gatve

Štrausi

Valdlauču centrs

Sarma

Rāmava

Pagrieziena uz Baložiem

Sūkņu stacija

Meža iela

23 13.janvāra iela (13.janvāra iela)

Route streets: Abrenes iela, Dzirnāvu iela, Satekles iela, Marijas iela, 13.janvāra iela, 11.novembra krastmala, Akmens tilts, Mūkusalas iela, Akmeņu iela, Jelgavas iela, Bauskas iela, A 7, Baložu iela, Rīgas iela

27

22 23 26

Monday-Friday

(valid from 2022-06-20)

5	20 40
6	03 31 59
7	20 45
8	16
9	08 56
10	22 55
11	35
12	08 43
13	20 55
14	40
15	10 39
16	06 29 58
17	26 52
18	20
19	07 36
20	29
21	18
22	24
23	23

Saturday, Sunday and festival day

(valid from 2022-06-23)

6	00 35
7	07 40
8	15 47
9	17 50
10	20 51
11	21 46
12	11 36
13	08 36
14	09 45
15	20 50
16	27
17	04 48
18	22
19	02 50
20	21
21	12
22	10 50

Schedules are subject to traffic delays.

Click departure time to display departure times from all stops in that trip.

Route times

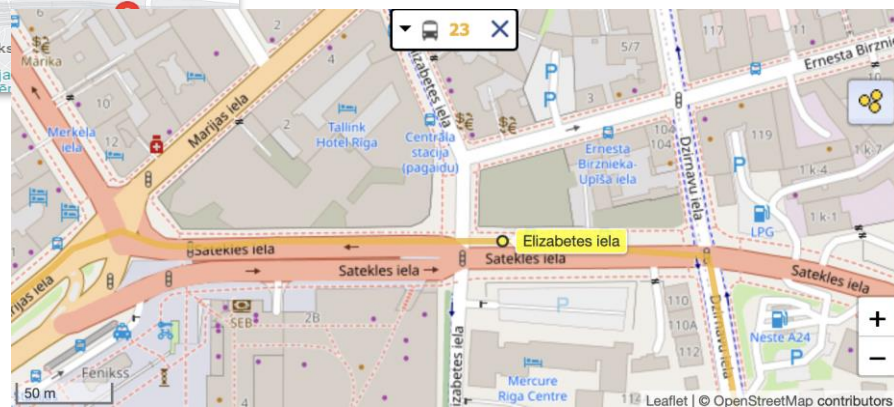
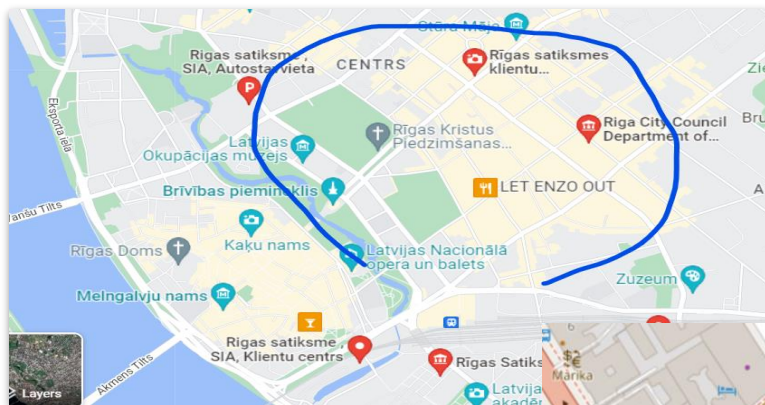
Getting to the ATEE Conference venue

- if you are staying at a hotel outside old town

Go to the bus stop called
"Elizabetes street"
located here (see a
yellow mark on the map)

and look for the number
"23." on the **blue** stop
signs

(Time options are available
on the next slide)



BUS number 23 (bus stop “Elizabetes iela”)

Name of the
bus stop

23

Abrenes iela - Baloži

Abrenes iela

Elizabetes iela

13.janvāra iela

Nacionālā bibliotēka

LU Akadēmiskais centrs

2.trolejbusu parks

Bieķensalas iela

Satiksmes iela

Koku iela

Skaistkalnes iela

Stērstu iela/CSDD

Ziepniekkalna iela

Doles iela

Bišumuiža

Jāņa Čakstes gatve

Štrausi

Valdaiču centrs

Sarma

Rāmava

Pagriezieni uz Baložiem

Sūkņu stacija

Meža iela

23

Elizabetes iela (Satekles iela)

Route streets: Abrenes iela, Dzirnau iela, Satekles iela, Marijas iela, 13.janvāra iela, 11.novembra krastmala, Akmens tilts, Mūkusalas iela, Akmeņu iela, Jelgavas iela, Bauskas iela, A 7, Baložu iela, Rīgas iela

5

10

12

18

23

25

26

51

52

55

333

363

Monday-Friday

(valid from 2022-06-20)

5	17 37
6	00 28 56
7	17 42
8	13
9	05 53
10	19 52
11	32
12	05 40
13	17 52
14	37
15	07 36
16	03 26 55
17	23 49
18	17
19	04 33
20	26
21	15
22	21
23	20

Saturday, Sunday and festal day

(valid from 2022-06-23)

5	57
6	32
7	04 37
8	12 44
9	14 47
10	17 48
11	18 43
12	08 33
13	05 33
14	06 42
15	17 47
16	24
17	01 45
18	19 59
19	47
20	18
21	09
22	07 47

Schedules are subject to traffic delays.
Click departure time to display departure times from all stops in that trip.

Bus
timetable

The link is available [here](#)

When you get on a public transport,
beep your e-ticket



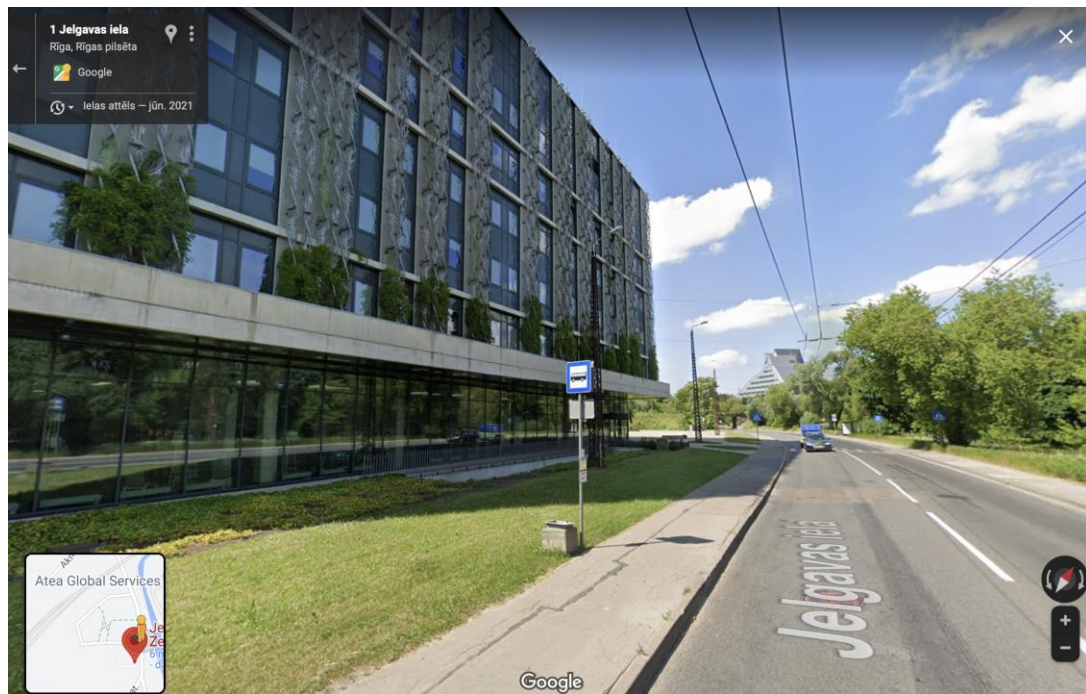
Getting to the ATEE Conference venue



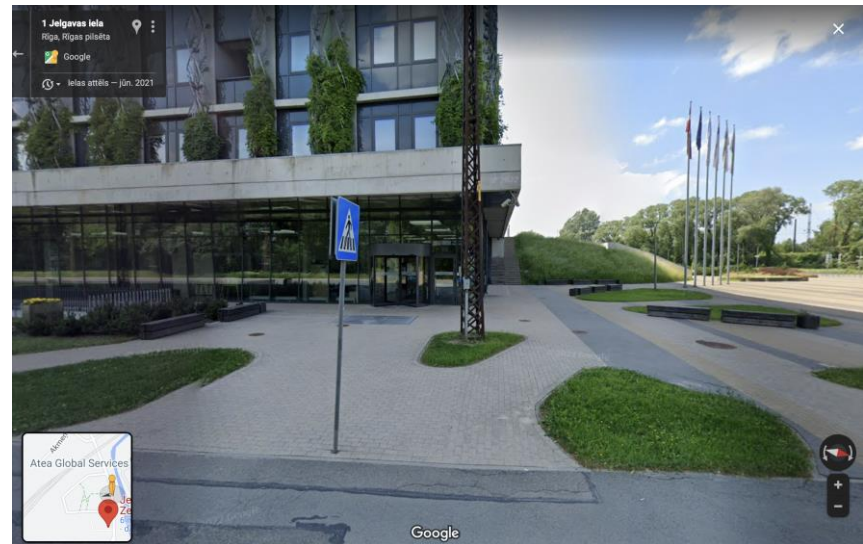
The short ride will be about
10 minutes long

Please, get off at the stop
called
"LU Akadēmiskais centrs"

When getting off the bus, go straight past the building (as shown in the picture)



Turn left and go straight to the indicated entrance



Contacts

Linda Daniela +37126408896

Arta Rūdolfā +37122047309

Emergency 112



Social dinner on **August 30** at **19:00** Restaurant “Gutenbergs terase”



Address: Doma laukums 1,
Centra rajons, Rīga
<https://restaurant-gutenbergs.lv/>

Please register via this link:
<https://conferences.lu.lv/event/41/registrations/>



Guided tour on August 31

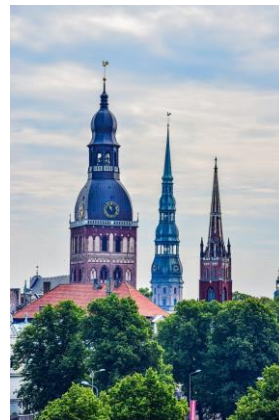
On August 31, 3 PM the conference will be concluded with a guided tour, during which you will learn more about Riga, its history, architecture, and beautiful views from both land and water.

During the 2-hour walking tour, you will discover the most important and outstanding places in Riga - the capital of Latvia and the largest city in the Baltic Countries, founded in 1201 by a German bishop. Riga offers a very versatile architectural and cultural heritage – the old town preserves buildings from medieval times to today (medieval churches, guild buildings, the famous House of the Blackheads, the Town Hall, the House of the Black Cat, the Riga Palace, Three Brothers, etc.).

We will walk through the historical center's smaller and bigger streets and squares to appreciate it. Riga is also home to more than 700 Art Nouveau buildings, built during the first quarter of the 20th century, and has many beautiful parks. Thus we will cross various parks to see the most distinguished Art Nouveau facades.

After the walking tour, we will take a boat and go along the city's canal and the river Daugava to admire the city from another point of view.

Please apply via this link: <https://conferences.lu.lv/event/41/registrations/>



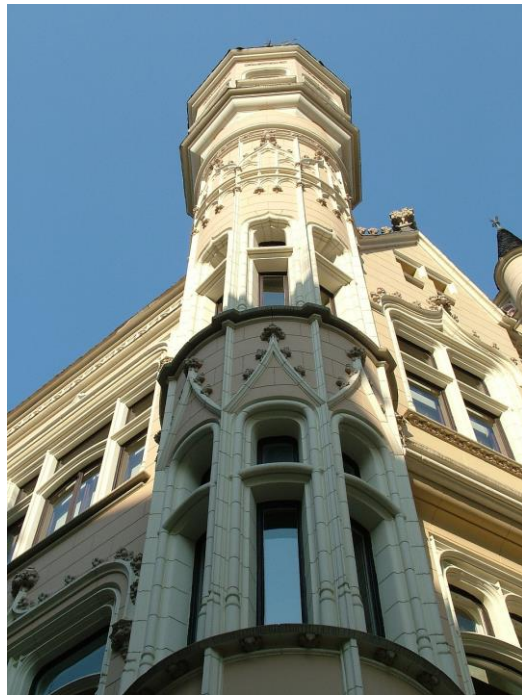
Useful phrases in Latvian:



Hello - Labdien (formal)
or
Čau (informal)

Thank you – Paldies
My name is ... - Mani sauc
....
Cheers – Priekā

Some suggestions for free time in Riga



Take a walk around the Old Town



Visit the Latvian National Museum of Art

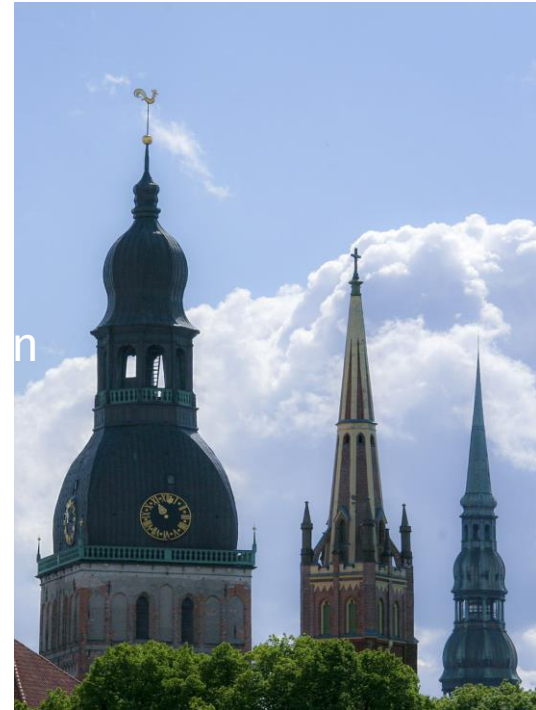


<https://www.lnmm.lv/en/latvian-national-museum-of-art/visit/tickets>

Visit the tower of St. Peter's Church

Riga's tallest church with a tower offering a breathtaking view of the red roofs of Old Town, the modern part of the city, Riga Bay and the Daugava River with its large port.

<https://peterbaznica.riga.lv/en/serviceshours/>



Visit the National Library of Latvia / Castle of Light

The new building of the National Library of Latvia was opened in 2014. It is called the 'Castle of Light' — the centre for the nation's accumulated intellectual treasures, a hub for contemporary culture and exchanging information, and a platform where new ideas are born and nurtured, to be passed along to next generations.



<https://www.lnb.lv/en>

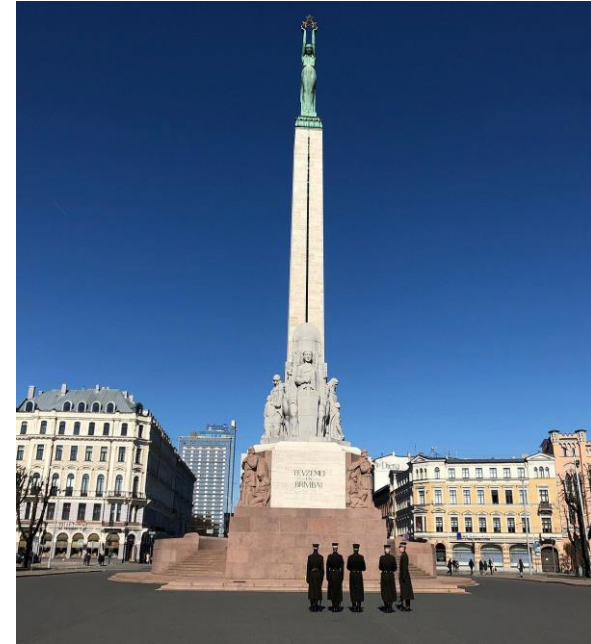
Take a photo at the Freedom Monument

The Freedom Monument symbolizes the idea of independence.

The 42.7-metres high monument is made up of 56 sculptures, divided into 13 sculptural groups, which depict Latvian history and culture.

At the base of the monument, the motto For Fatherland and Freedom is inscribed.

<https://www.liveriga.com/en/3231-freedom-monument>



Visit Europe's largest market

<https://www.rct.lv/en/>



The state of Latvia and society supports Ukraine and provides unified and coordinated assistance to Ukraine and Ukrainian refugees.

Latvia is a member state of NATO.

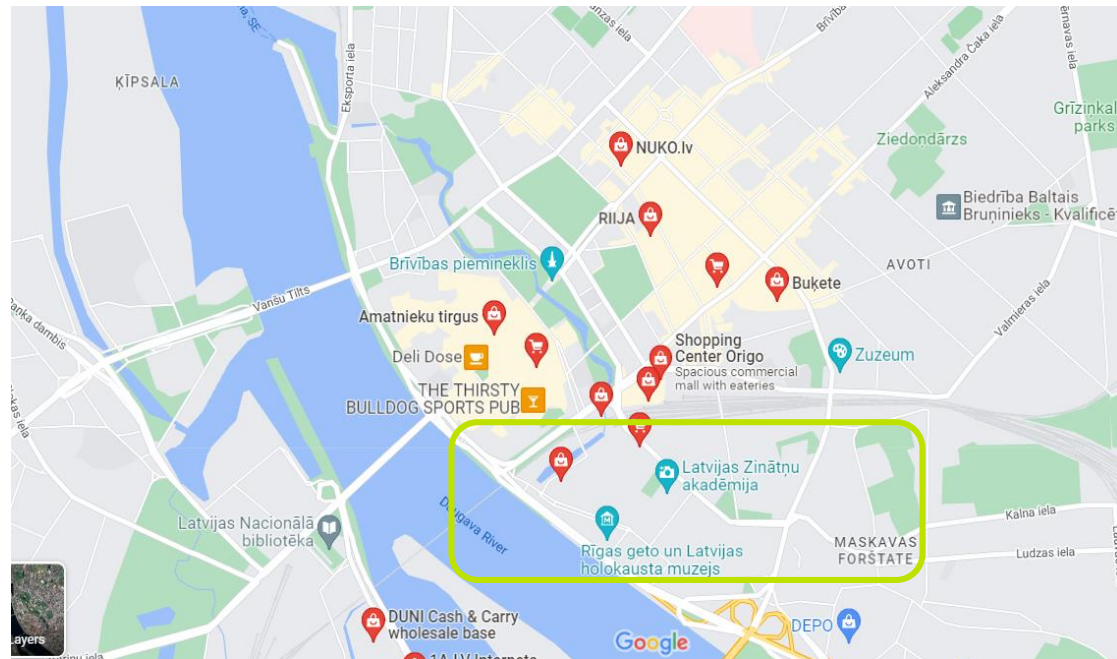


Other suggestions

Riga is a relatively safe city, but as with all big cities you must be aware of your surroundings.

Some reasonable precautions should be taken, e. g, do not walk late at nights alone and watch your personal belongings in crowded touristy places, e.g., central market or public transport.

We wish you to have a wonderful time in Riga!





See you soon!

