

**Interreg  
Europe**



Co-funded by  
the European Union

**SIRM**

# **The General Inspectorate for Immigration**

## **Maramureş Regional Centre for Accomodation and Procedures for Asylum Seekers**

**Dora Ruxandra SLABU**

*The General Inspectorate for  
Immigration REPRESENTATIVE*

05 June 2024 Brindisi

# Introduction

**SIRM**

## About The General Inspectorate for Immigration

The General Inspectorate for Immigration is organized and acts as a specialized structure of the central public administration. It is a public institution with legal personality and is coordinated by the Ministry of Internal Affairs.

Its activity is based on implementing the Romanian policies and relevant legislation in the fields of migration, asylum and foreigners` integration.



**MARAMUREȘ REGIONAL CENTER FOR  
ACCOMODATION AND PROCEDURES  
FOR ASYLUM SEEKERS**

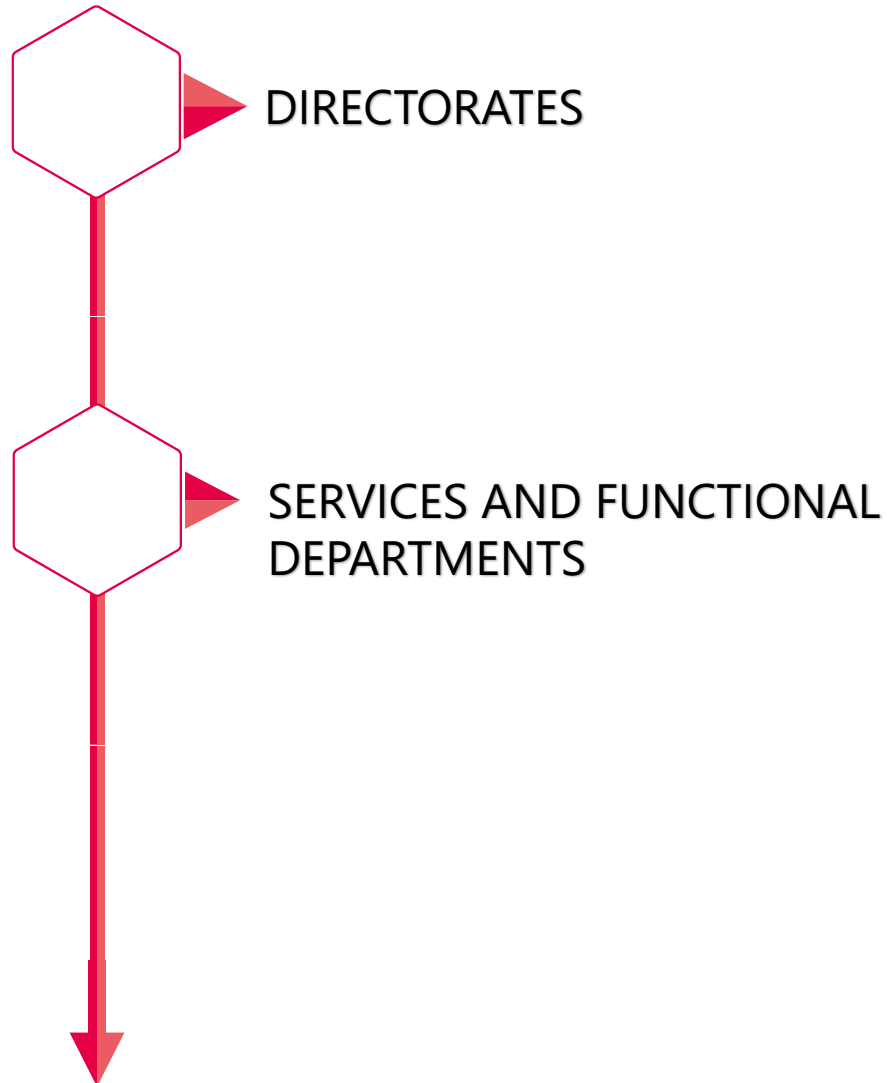
The **General Inspectorate for Immigration** is divided  
at central level into

Interreg  
Europe



Co-funded by  
the European Union

SIRM



and at territorial level into



# MARAMUREȘ REGIONAL CENTRE FOR ACCOMODATION AND PROCEDURES FOR ASYLUM SEEKERS

*runs procedures for asylum seekers and conducts integration programs for refugees*

## Asylum seekers

in accordance with **Law no.122 of 4 May 2006** regarding asylum in Romania

Asylum seekers in ► **2023 = 1333**

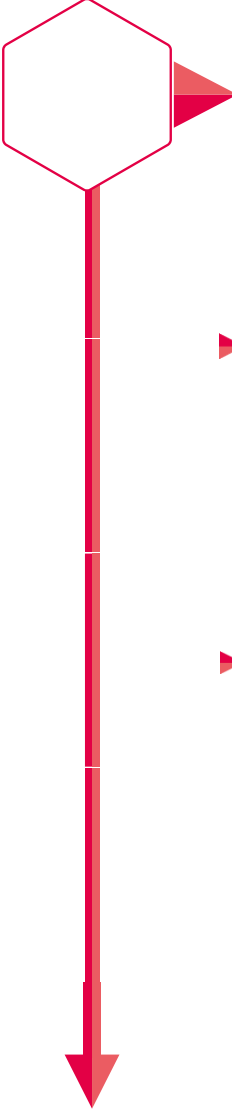
## Refugees

in accordance with **Law no.122 of 4 May 2006** regarding asylum in Romania and **OG (Government Order) no.44 of 29 January 2004** regarding the social inclusion of foreigners having been granted international protection or the right to stay in Romania as well as of the citizens of European Union and European Economic Area states

## Temporary protection for the Ukrainians

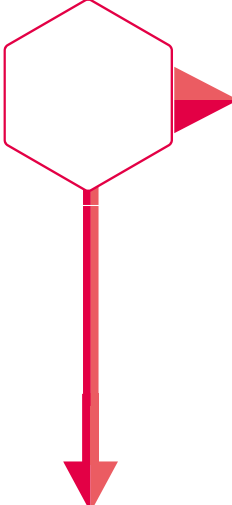
- **2022 = 8500**
- **2023 = 3300**
- **2024 = 1300**

## **MARAMUREȘ REGIONAL CENTRE FOR ACCOMODATION AND PROCEDURES FOR ASYLUM SEEKERS**



**Provides specific services to facilitate the integration in Romanian society of different categories of foreigners by**

- ▶ facilitating access to a range of social and economic rights such as the right to employment, to housing, the right to education, the right to health care and social assistance
- ▶ conducting integration programs (specific cultural orientation activities, counseling and learning the Romanian language).

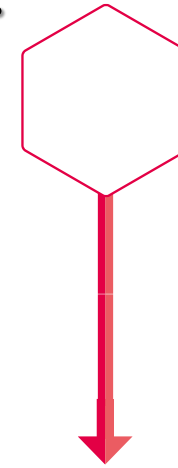


**The overall objective of the policy on integration of foreigners who obtained a form of protection in Romania, is to help them self-sustain, become independent from assistance from the state or non-governmental organizations and actively participate in the economic, social and cultural life.**

# MARAMUREȘ REGIONAL CENTRE FOR ACCOMODATION AND PROCEDURES FOR ASYLUM SEEKERS

Asylum seekers entering our Regional Center receive:

- Legal advice upon accommodation in center*
- Medical check up*
- Prophylactic and primary psychological assistance*
- Social assistance*
- Cultural accommodation*
- Accommodation and financial support if needed*



*Activities meant to  
prevent social isolation*

The team providing these services is formed by specialists

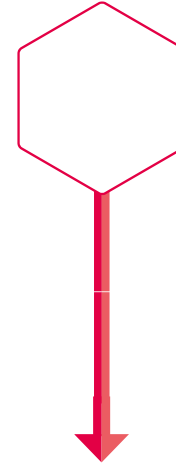
- *Legal counsels*
- *Doctor and nurses*
- *Psychologist*
- *Social worker*

*in close collaboration with the NGO partners*

## MARAMUREȘ REGIONAL CENTRE FOR ACCOMODATION AND PROCEDURES FOR ASYLUM SEEKERS

In order to **control social exclusion**, refugees can participate in one year Integration Program which provides:

- Romanian language classes*
- Intercultural accommodation activities*
- Psychological assistance*
- Social assistance*
- Medical counseling*
- Educational activities*
- Accommodation and financial support if needed*



***Activities meant to prevent  
social isolation***

***Provided by the GII specialists and the NGO partners***

- ***Legal counsels***
- ***Doctor and nurses***
- ***Psychologist***
- ***Social worker***

***Throughout the integration program we carry out specific cultural activities such as:***

***Celebrating Christmas***



▶ ***Foreigners were presented the customs in our country, the traditional garment, Christmas carols, traditional menu***

***Celebrating Mother`s and Women`s Day***

***Receiving Santa Claus***



***The women in the center were given flowers as a sign of appreciation***



**Specific intercultural activities in collaboration with the Romanian teacher and pupils from "Ioan Buteanu" Highschool in Somcuta Mare as well as with the NGO specialists partners**

**Presenting Romanian traditions**



**Intercultural tradition exchange**

**"Fruits` and vegetables` week"**



**Visiting the annual "Flower exhibit" in Baia Mare**



## ***International Day of the Refugees (20<sup>th</sup> of June)***



## ***International Children`s Day (1<sup>st</sup> of June)***



***activities conducted in collaboration with the NGOs partners***



# Arts and crafts workshops





# **Immigration through a refugee`s eyes**

***Interview with a Palestinian Refugee  
successfully integrated in the Romanian  
society***

***What determined you to leave your country?***

Although there are many important reasons for which I chose to leave my country, Romania is one of the safest countries in the world. One reason would be: 70 years of continuous violence in my country and many innocent lives taken.

***Who did you come with and who did you leave behind?***

I came alone, I left my parents, brothers and sister.

***Who helped you the most in your accommodation process?***

I made a lot of friends in Romania and also I work as a cultural mediator in the refugee center so I would say the environment helped me gradually integrate in the Romanian society. In my line of work I meet people from different cultures including from Africa, Middle East and Asia but when I get home I am surrounded by Romanian people only.

***Is immigration a difficult thing to do? What is the source of your strength?***

What makes immigration a difficult thing is the immigrant's personality, the easiness or not to accept and adapt to the new society.

***What makes you proud? And why?***

Many of my accomplishments in Romania make me proud. Such as getting my residence permit in Romania, having made so many friends, my work as a cultural mediator and being chosen to represent the immigrants and speaking in front of an audience formed by the Ministry of Education and Culture. I can speak Romanian and that also makes me proud.

***What 2 or 3 things would you consider important for an easier accommodation in a new country?***

Accepting the culture of the host country, learning the language, being a good person and making friends. Migrants should be patient, diligent and willing because if you are not pleased you won't progress.

***A. N. 35 years old from Palestina, 4 years of integration in the Romanian society***

# The benefits of participating in the Integration Program

- *Romanian language courses*
- *Cultural accommodation activities*
- *Support in finding accommodation, job, access to public health care*

*These activities help gradually adapt to the new culture, building a new "home", making connections and integrate in a new community.*

## The General Inspectorate for Immigration

cooperates with other public institutions and NGOs in order to integrate foreigners

- partner institutions:

The National Agency for Social Services and Benefits

The National Employment Agency

The Border Police

The National Police

The Territorial Labor Inspectorate

The General Department of Social Service and Child Protection

The Inspectorate for Emergency Situations

The County School Inspectorate

The County Council of Maramures

- partner NGOs:

**AIDROM** (*The Ecumenical Association of the Churches in Romania*)

**CNRR** (*Romanian National Council for Refugees*)

**Salvati Copiii** (*Save the Children*)

**JRS** (*Jesuit Refugee Service Romania*)

**UNHCR** (*The UN Refugee Agency*)



# Thank you!

[www.interregeurope.eu/SIRM](http://www.interregeurope.eu/SIRM)

**Dora Ruxandra SLABU**

*The General Inspectorate for  
Immigration - MARAMUREȘ REGIONAL  
CENTRE FOR ACCOMODATION  
AND PROCEDURES FOR ASYLUM  
SEEKERS – REPRESENTATIVE -*