

Planning with umbrella species

One way to prioritize



Old trees are popular habitats

- A lot of rare species
 - 700 -800 redlisted species
 - 1300 species
- Every tree has many different habitats
 - Holes and cavities
 - Sunlit bark
 - Damp areas
 - Dead wood
 - Branches in the crown
 - Sap flows



Green infrastructure



Hermit beetle
Osmoderma eremita



Lesser spotted woodpecker
Dryobates minor



Green infrastructure



Dispersal 200 m

Dependent on hollow trees

Hermit beetle
Osmoderma eremita



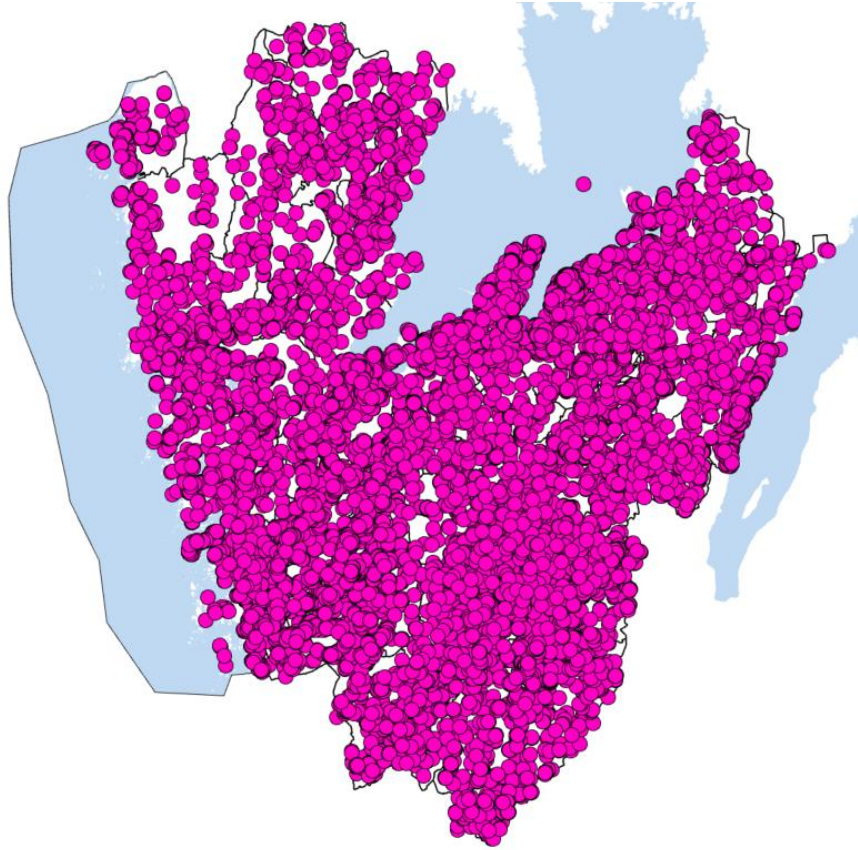
Dispersal 2 km

Dependent on old broadleaved trees

Lesser spotted woodpecker
Dryobates minor



Survey of veteran trees



- Which trees are most important?
- Where is it most important to improve habitat quality?
- Are some trees OK to lose?



Survey methods



- 15 years
- Collaboration, with towns, organisations, interns, students.....
- National method
- Maps available on webpage
- Map updated "yearly"
- Estimated 80% found

Undersökningstyp
(Manual för undersökning)

Inventering av skyddsvärda träd i
kulturlandskapet

Version 3:0, 2021 -10-12

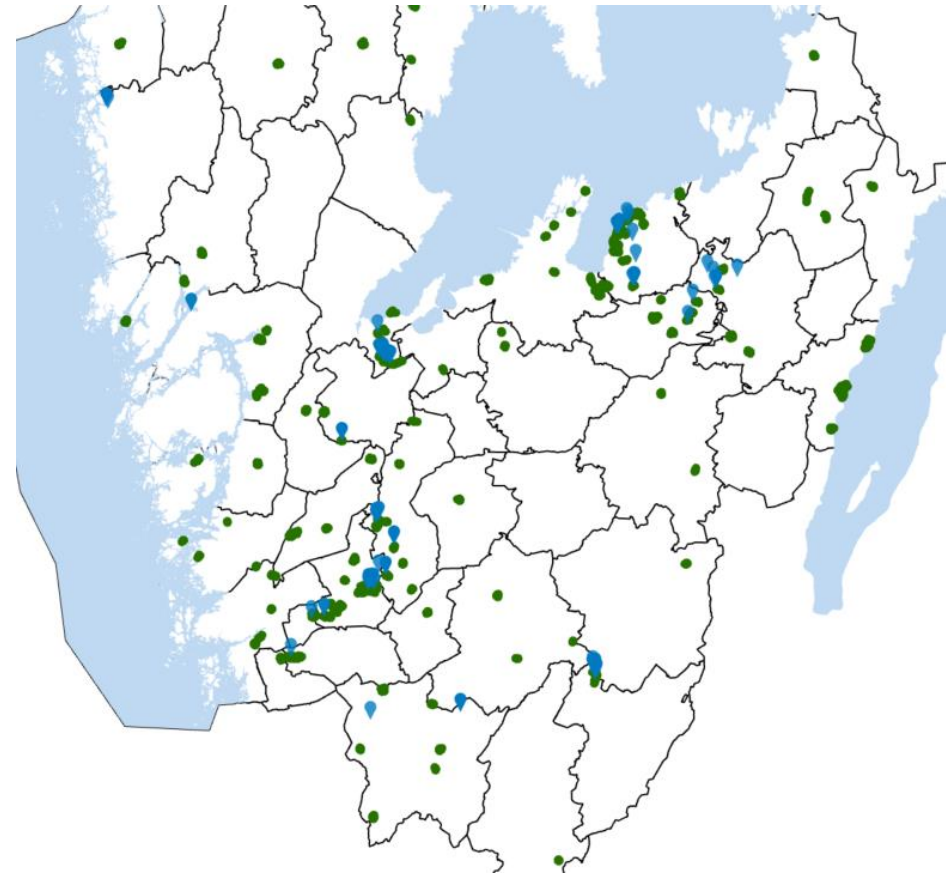
Programområde: Landskap
Handledning för miljöövervakning



Länsstyrelsen
Västra Götaland

Tree value core areas

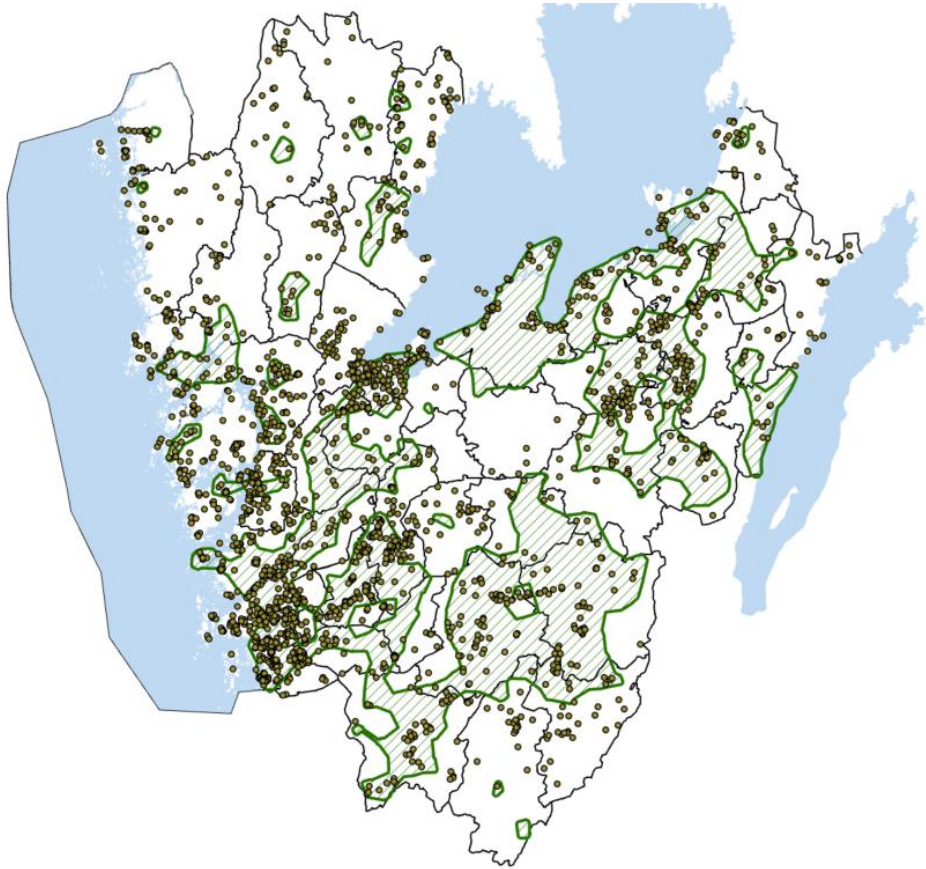
- > 50 trees
- < 200 meters between them
- Sustainable habitat for hermit beetle



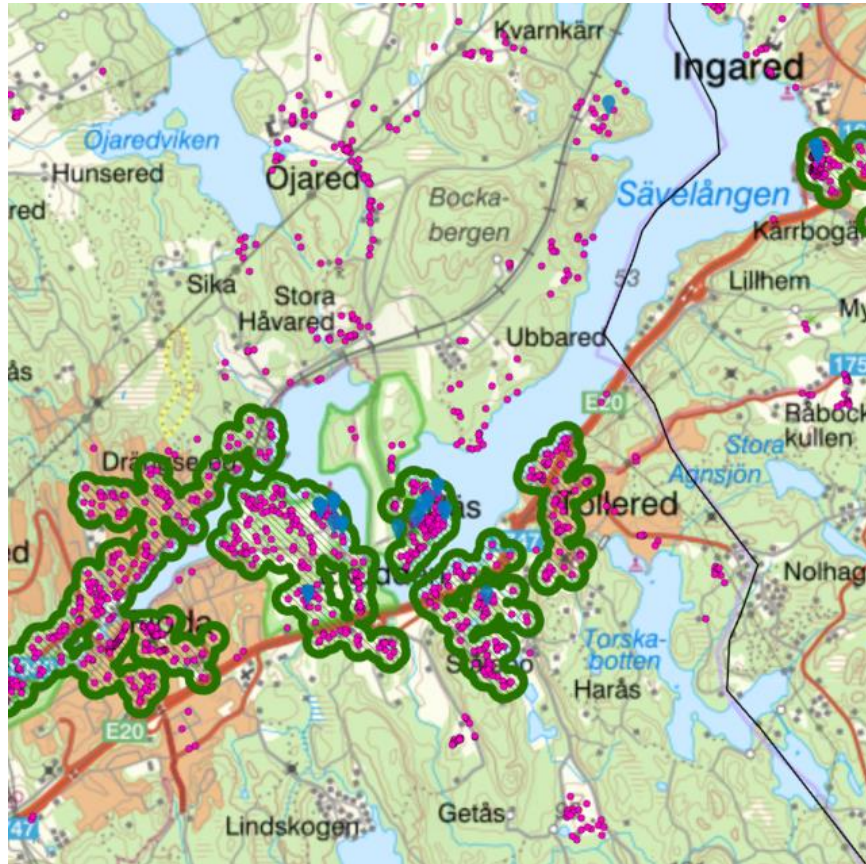
Tree value areas

> 50 trees
< 2 km between the trees

Sustainable habitat for lesser wood pecker



Example Nääs



In theory

Enlarge the value cores

Join value cores

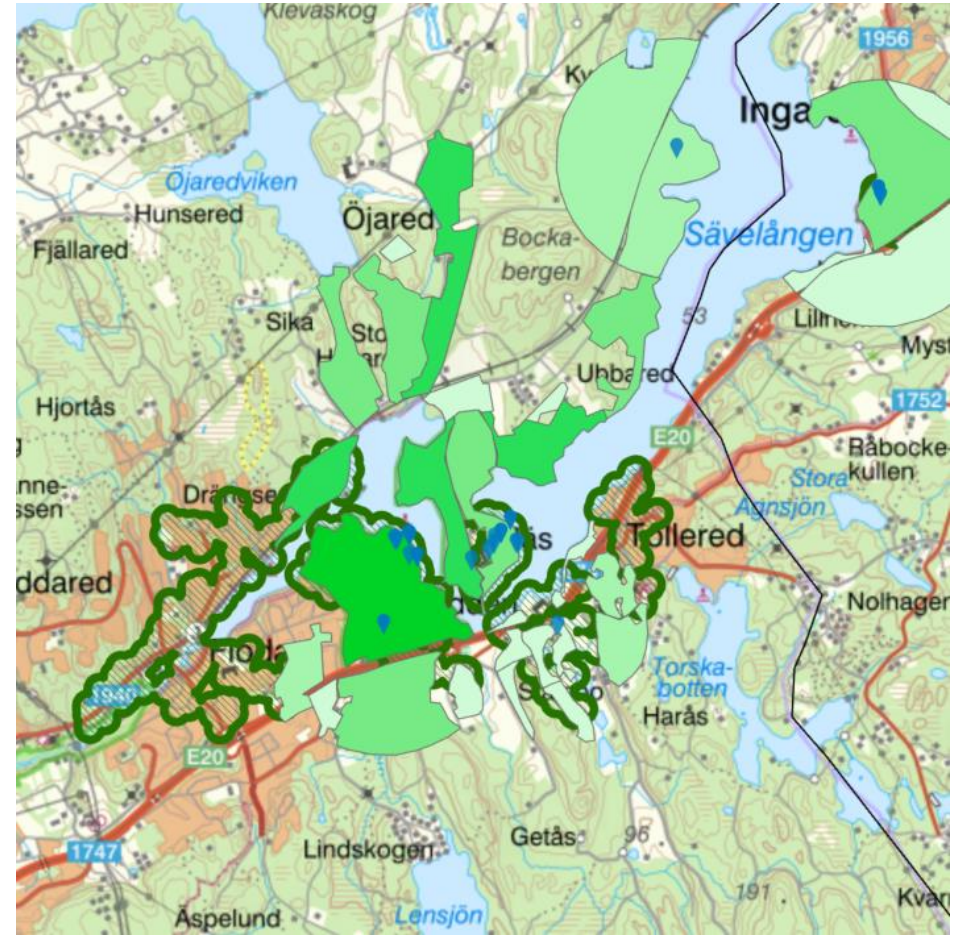
In practice

- Interested land owners
- Land management
- Younger trees



Survey of younger trees

- Trees 50-100 in diameter
 - Number of broad leaved trees
 - Tree species
 - Holes
- 1 km from Osmoderma



Quick fix

- Halo cutting / clearing
- Veteranization
- Wood mould boxes



Photo: Kenneth Claesson



Long term measures

- Enough trees in all age classes
- Halo cutting around younger trees
- Cages
- Planting



Thank you



Länsstyrelsen
Västra Götaland