

**Interreg
Europe**



Co-funded by
the European Union



Poslovno podporni center Kranj
Regionalna razvojna agencija Gorenjske

GIFT

Cross-sectoral Enhancement of Species and Habitat Conservation in Triglav National Park (TNP)

Mateja Korošec, BSC Kranj

24.9.2025 | Riga

Location of Triglav national park in Slovenia



Triglav National Park



- **Slovenia's only national park, managed by the Public Institute Triglav National Park**
- **Area: ~880 km² (covers about 4% of Slovenia)**
- **Highest point: Mount Triglav (2,864 m); lowest point: ~180 m**
- **Biodiversity: Nature 2000, home to endemic species, large carnivores (bear, wolf, lynx), and diverse alpine flora**
- **Habitats: Alpine peaks, high mountain pastures, forests, deep valleys, pristine rivers and glacial lakes**



Vrh Julijcev project - Improving the status of species and habitat types in the TNP



Cross-sectoral Conservation in Triglav National Park

- **Purpose:** to improve the status of key 8 species and 4 habitat types in the TNP
- **Duration:** 2018–2023
- **Budget:** 3.689.249,87 EUR, 80% of EU funds
- **Collaboration of nature conservation, forestry, tourism, agriculture, local communities,**
- **Partners:**

Lead Partner: Triglav National Park Public Institution (JZ TNP)

Project Partners: Institute of RS of Nature Conservation (ZRSVN), Slovenian Forestry Institute (ZGS) The Fisheries Research Institute of Slovenia (ZZRS, Tourism Bohinj – Institute for Tourist Promotion, Municipality of Tolmin, Chamber of Agriculture and Forestry of Slovenia – Agricultural and Forestry Institute Kranj, Society for Observation and Study of Birds of Slovenia (DOPPS), Alpine Association of Slovenia (PZS)



Quiet areas and traffic

- Establishment of 19 quiet zones in Pokljuka, Vogel, Triglav area, Mangart Pass and Vitranc.
- Effective traffic regulation on key roads
- Reduction of disturbances to animals
- Increased safety during forestry work



Species / Habitat Type	Number of Calm Areas
Western Capercaillie	13
Raised Bog	3
White-tailed Eagle	3
TOTAL	19



Forest and Trees

- Planting of native fruit trees and shrubs (10 ha, 60 locations)
- 15 ha of overgrown areas cleared
- 61 km of forest cross-sections cleared
- Increased food supply and improved conditions for wild grouse and other species
- Purchase of private forests covering 135.78 ha

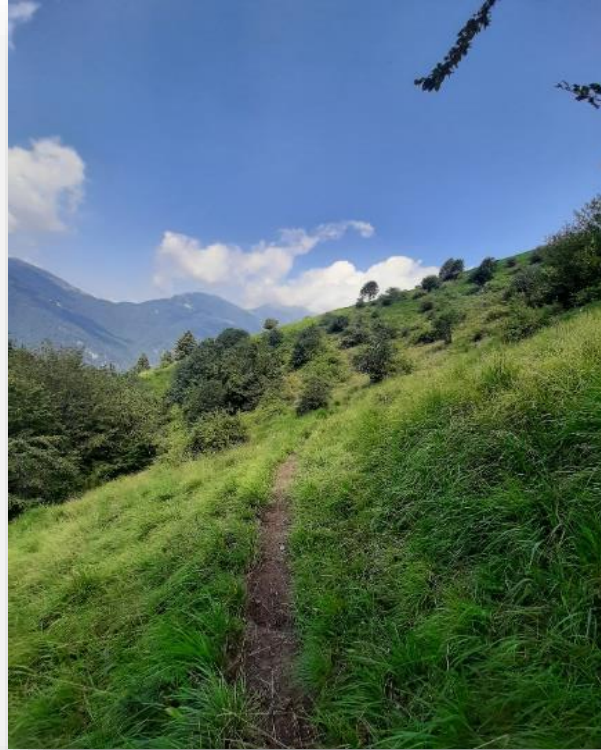


Improved condition of forests on 40 ha

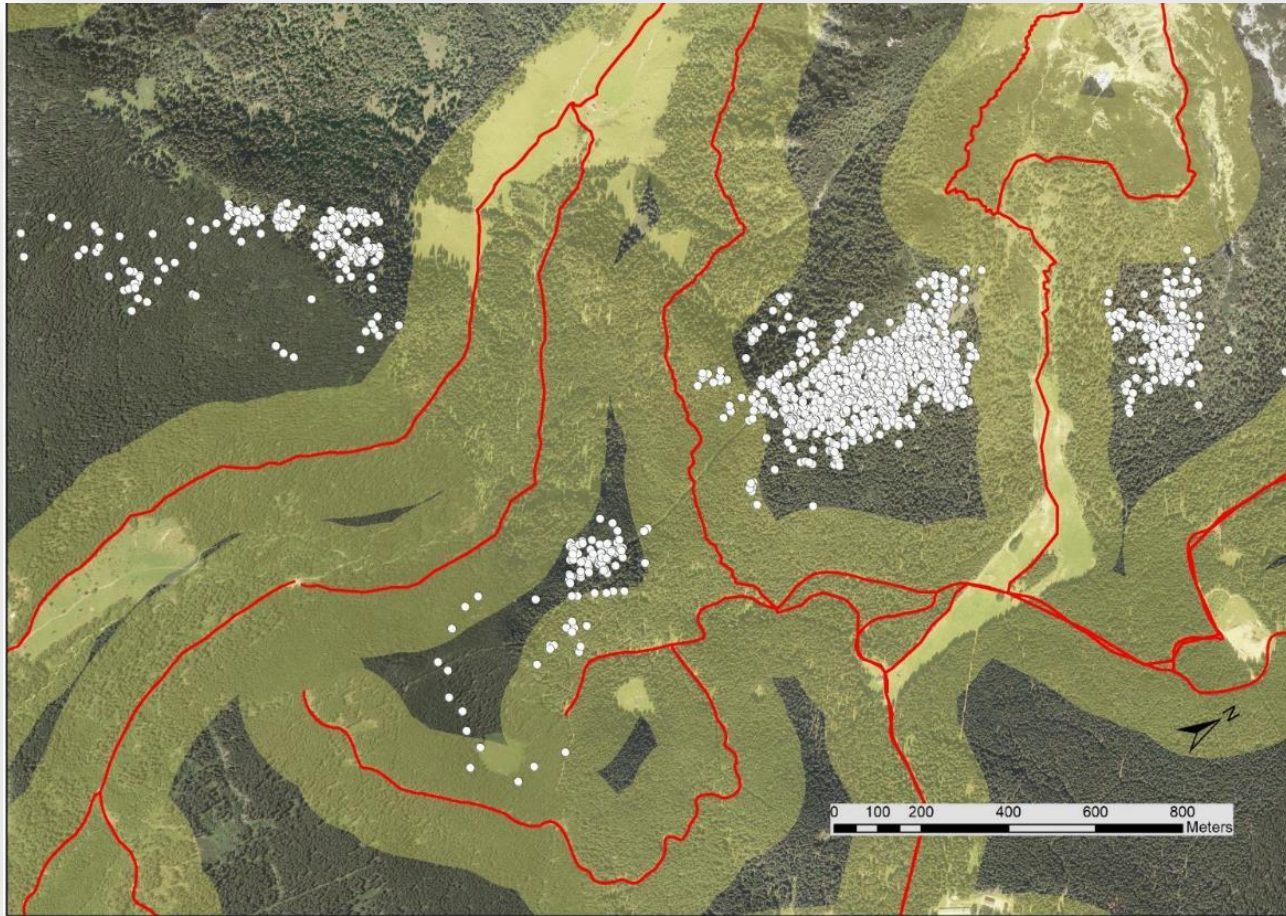
Removal of woody vegetation

- Removal of wooded vegetation
- Revitalization of mountain pastures by removing vegetation
- Revitalization of mountain pastures by improving grazing areas

20.53 ha of land with cleared woody vegetation



Remote monitoring of animals



New infrastructure of TNP

TRIGLAVSKI NARODNI PARK | **Mirna območja**
Quiet zones



Mirna območja so pomembni Triglavski naravni park, ki so ključna za ohranjanje naravnih vrednot in biotske raznovrstnosti. Ukrepi so namenjeni za ohranjanje naravnih vrednot in biotske raznovrstnosti. Mirna območja so pomembni Triglavski naravni park, ki so ključna za ohranjanje naravnih vrednot in biotske raznovrstnosti. Ukrepi so namenjeni za ohranjanje naravnih vrednot in biotske raznovrstnosti.

Quiet zones are areas in Triglav National Park that play a key role in the preservation of plant and animal diversity. In these zones, certain activities are restricted to ensure the protection of the exceptional and natural values, while the main objective of the quiet zones is to ensure the protection of the rich heritage, both green and brown.

Mirna območja so v prostoru označena z opozorilnimi tablicami. / Quiet zones are marked with signs.

Pozor! Območja so dovoljena za splošno rabo			Pozor! Območja so dovoljena za splošno rabo		
No access			Access in restricted trails only		
1. Brestič	17. Dvor	29. Bujna hiva	5. Fala	13. Prace	27. Koroška vata
2. Hlakovci	18. Marinka gora	30. Lavinja od Bledskega jezera	6. P. R. R. R.	14. Prace	
3. Črna gora	19. Molekva	31. Soba	7. P. R. R. R.	15. Prace	
4. Komarščina	20. Jankovci	32. Soba od Sobe	8. P. R. R. R.	16. Prace	
5. Koroška	21. Molekva	33. Soba od Sobe	9. P. R. R. R.	17. Prace	
6. Prace B. G.	22. Na Koroški	34. Soba od Sobe	10. P. R. R. R.	18. Prace	
7. Prace B. G.	23. Na Koroški	35. Soba od Sobe	11. P. R. R. R.	19. Prace	
8. Prace B. G.	24. Na Koroški	36. Soba od Sobe	12. P. R. R. R.	20. Prace	
9. Prace B. G.	25. Na Koroški	37. Soba od Sobe	13. P. R. R. R.	21. Prace	
10. Prace B. G.	26. Na Koroški	38. Soba od Sobe	14. P. R. R. R.	22. Prace	
11. Prace B. G.	27. Na Koroški	39. Soba od Sobe	15. P. R. R. R.	23. Prace	
12. Prace B. G.	28. Na Koroški	40. Soba od Sobe	16. P. R. R. R.	24. Prace	
13. Prace B. G.	29. Na Koroški	41. Soba od Sobe	17. P. R. R. R.	25. Prace	
14. Prace B. G.	30. Na Koroški	42. Soba od Sobe	18. P. R. R. R.	26. Prace	
15. Prace B. G.	31. Na Koroški	43. Soba od Sobe	19. P. R. R. R.	27. Prace	
16. Prace B. G.	32. Na Koroški	44. Soba od Sobe	20. P. R. R. R.	28. Prace	



Awareness raising and education

- Documentary movie 'The Peaks of the Julian Alps' (50 minutes)

<https://www.youtube.com/watch?v=XG6IUZ5GyU>

- Brochure 'Forests on Pokljuka'
- Educational events, workshops, and field trips
- Summer camp 'Young Nature Conservationist'



Renovation of hiking trails and raising awareness

- Communication about respectful and responsible behaviour in the mountains
- Renovation of a section of the trail on the edge of the quiet area on Pokljuka (Jezerca-Studorski preval) that is highly exposed to erosion,



RESPECTFUL
AND RESPONSIBLE
BEHAVIOUR IN
WINTERTIME
MOUNTAINS



The investment is co-financed by the Republic of Slovenia and the European Union from the European Regional Development Fund.

Traffic regulation

- Free daily transport by bus from Bohinj to Pokljuka and back. During this time, interest in transport has increased significantly, and the capacity for transporting bicycles has also increased.
- Traffic regulation in Pokljuka (Parking lots)



Pond restorations

- **15 restored ponds** in hard to reach mountains and pastures



Telemetry Monitoring of Capercaillie and Hazel Grouse in the Julian Alps

Objective: Understand the behavior and habitat use of wild Capercaillie and Hazel Grouse beyond traditional surveys

Key Insight: Telemetry provides detailed data on habitat use, movement, and energy conservation strategies



Improving the condition of Twin Lakes and adapting the operation of the hut

- Removal of non-native fish species
- In total, they caught around 10,000 grayling and 18,000 lake trout.
- Two outdoor dry toilets, which will be available for use by visitors to the hut in the coming season.
- optimization of wastewater treatment

28,800 fish removed from the lake
Installation of 2 outdoor dry toilets



Cross-sectoral cooperation

- Integrating forestry, nature conservation, tourism, agriculture, mountaineering and local communities
- Strengthening mutual trust and respect
- Long-term basis for sustainable management
- Vrh Julijcev 2 project in preparation



The Vrh Julijcev project acts as a catalyst for intersectoral learning, transfer of tools and know-how, and wider replication of biodiversity-friendly practices, creating tangible and intangible benefits beyond the immediate project scope.



Thank you!

Website: <https://www.tnp.si/en/>

Video: <https://www.youtube.com/watch?v=XG6IUZ5GyU>

Contact: **mateja.korosec@bsc-kranj.si**

www.interregeurope.eu/GIFT