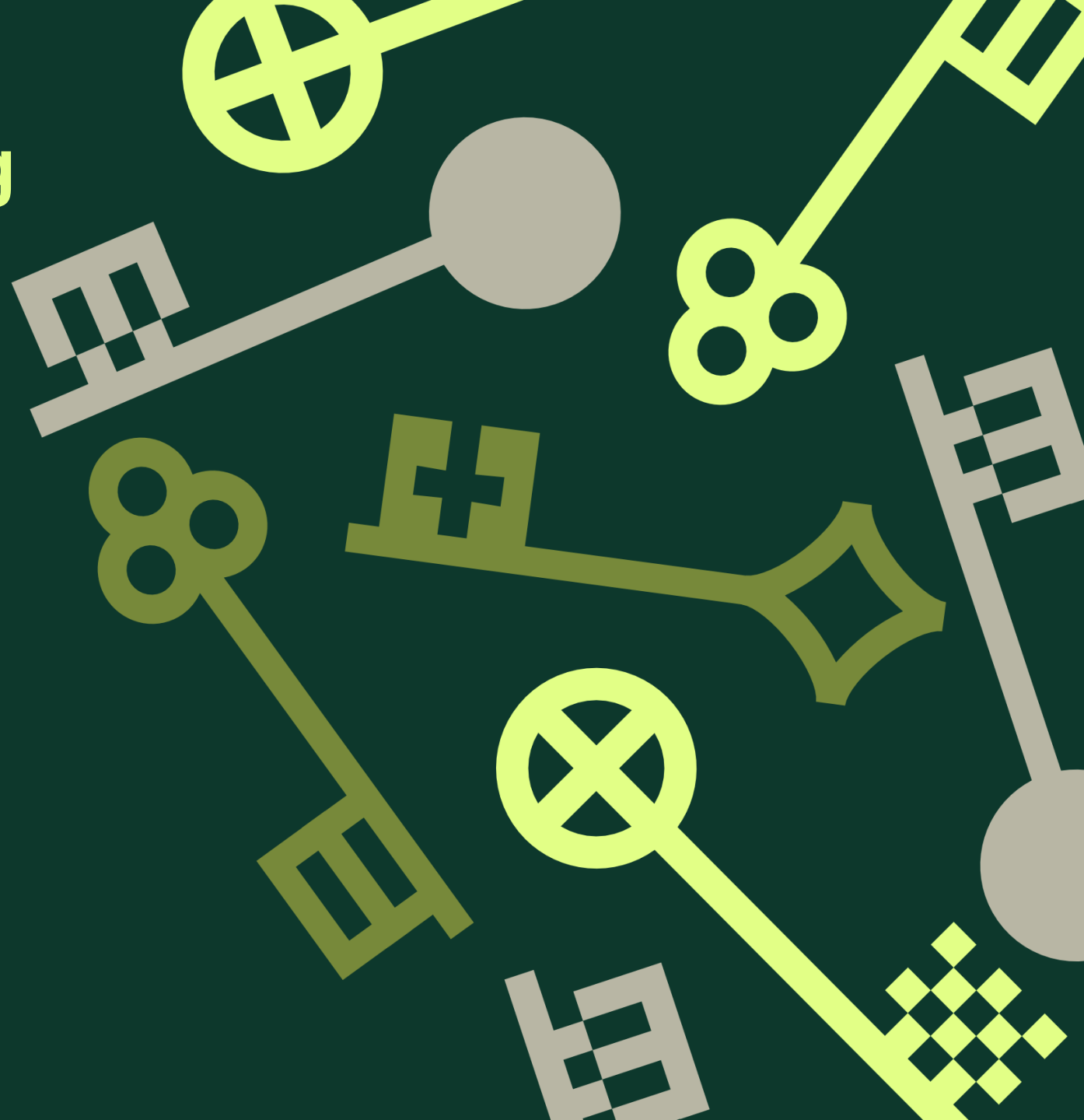


Riga's Urban Greening Plan: Nature-based Solutions for a Resilient Future

Jānis UŠČA

Riga City Development
Department

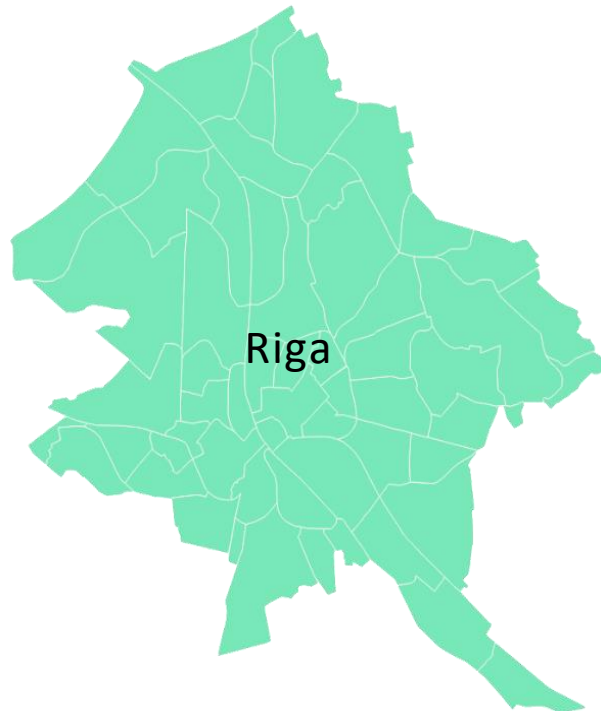




Europe



Latvia



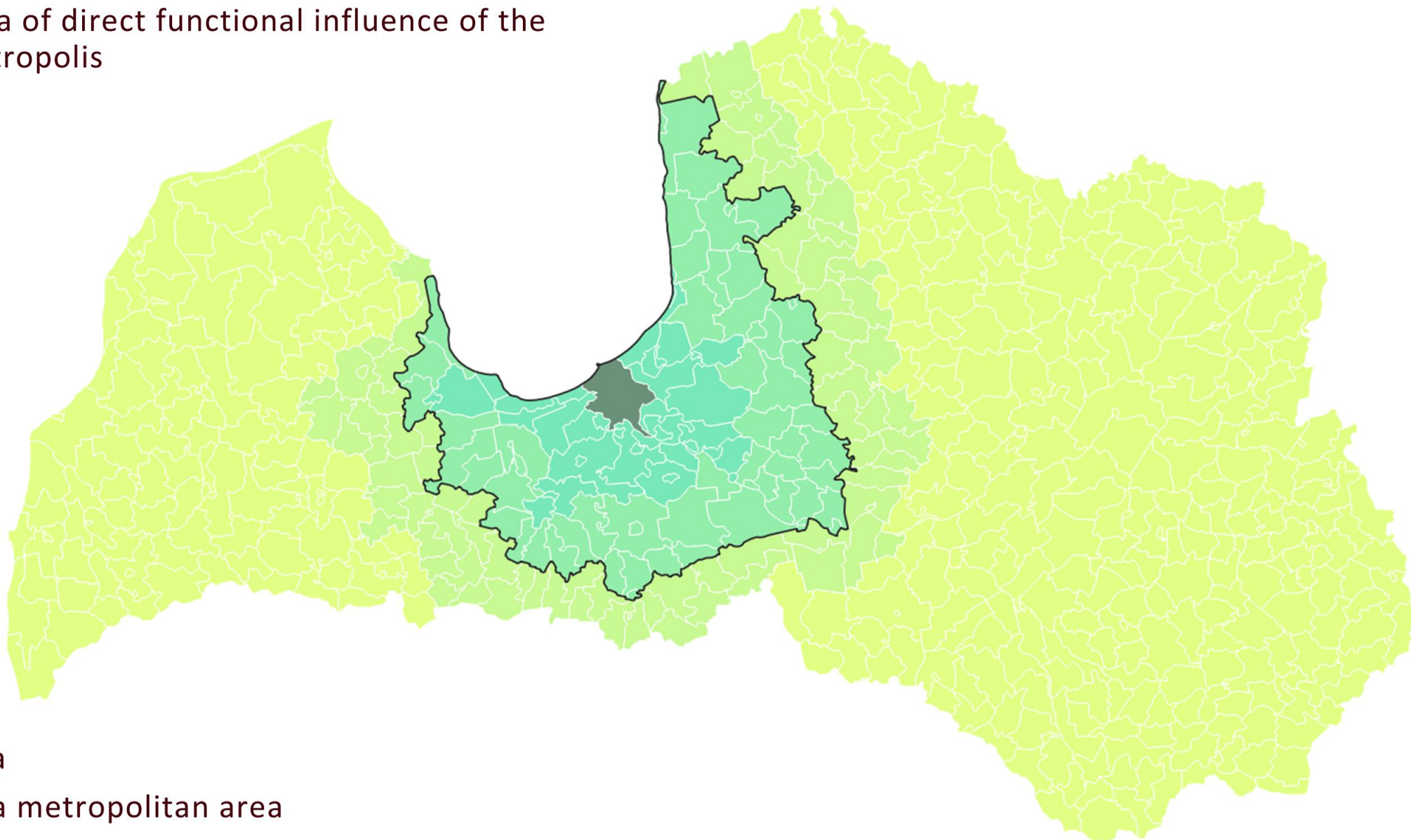
Riga

Riga is the capital of
the Republic of
Latvia and was
founded in

1201

Riga metropolitan area

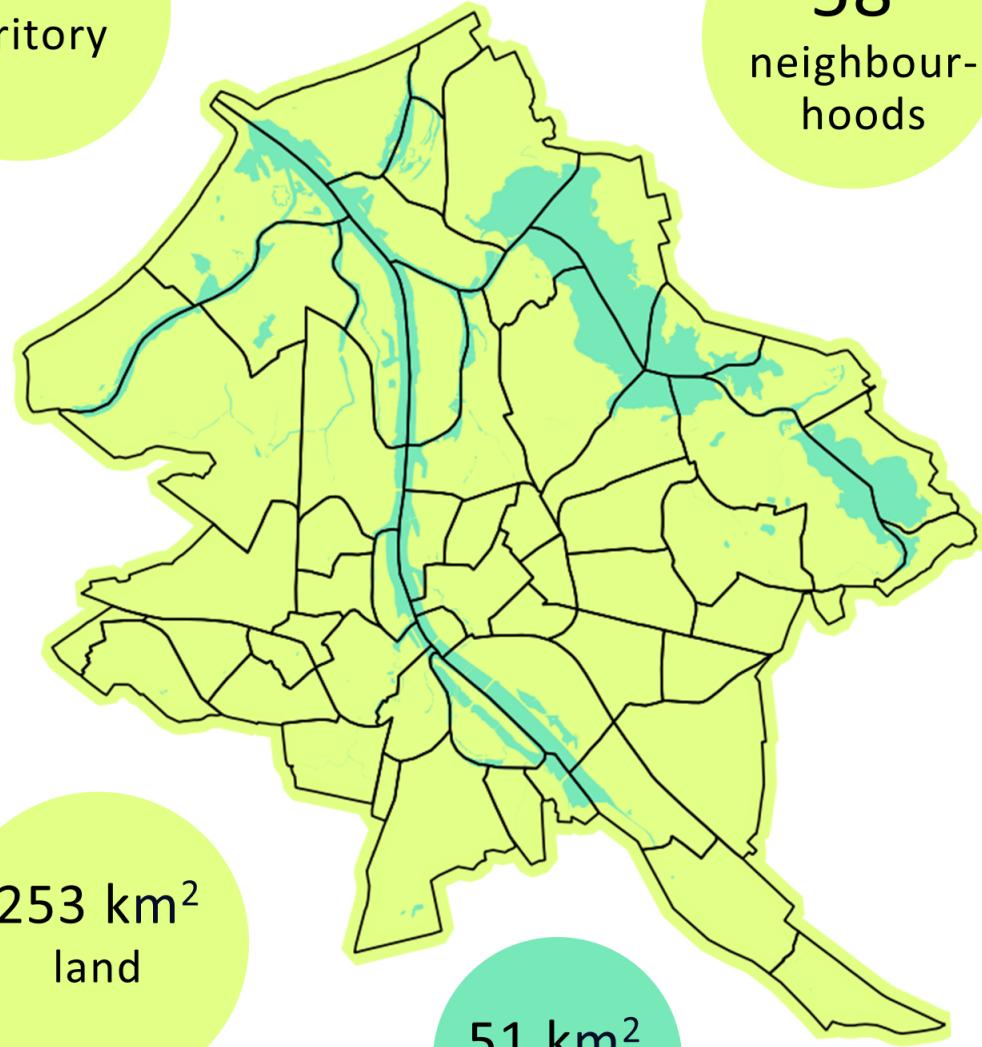
- Inner area of metropolis
- Outer area of metropolis
- Area of direct functional influence of the metropolis



- Riga
- Riga metropolitan area

304 km²
territory

58
neighbour-
hoods



253 km²
land

51 km²
water

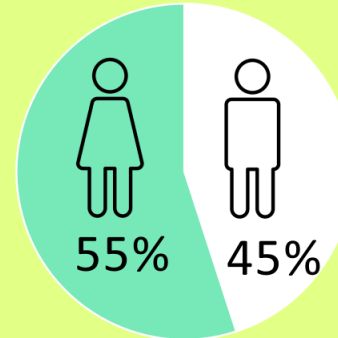
Riga in data

591 882
Residents in
Riga

1.25 miljons
residents in
metropolitan
area

2394
Residents per
km²

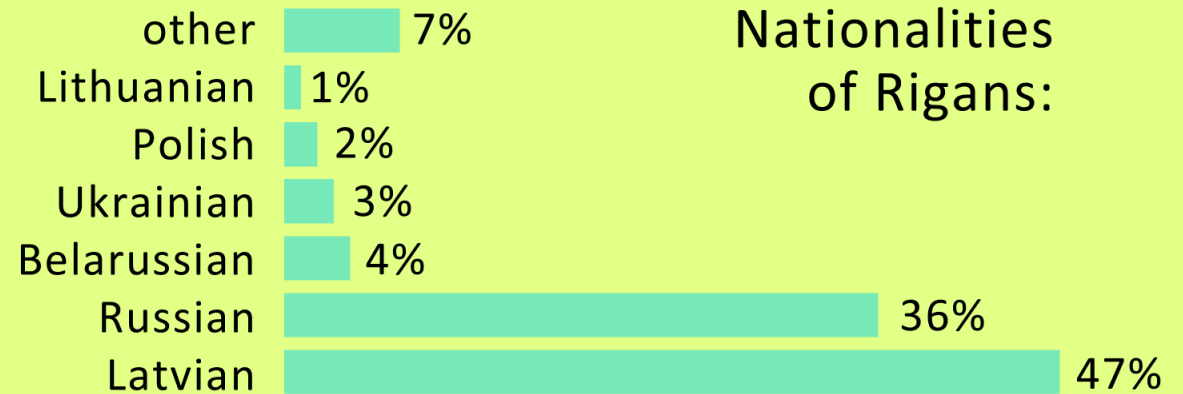
Gender:



Average age:

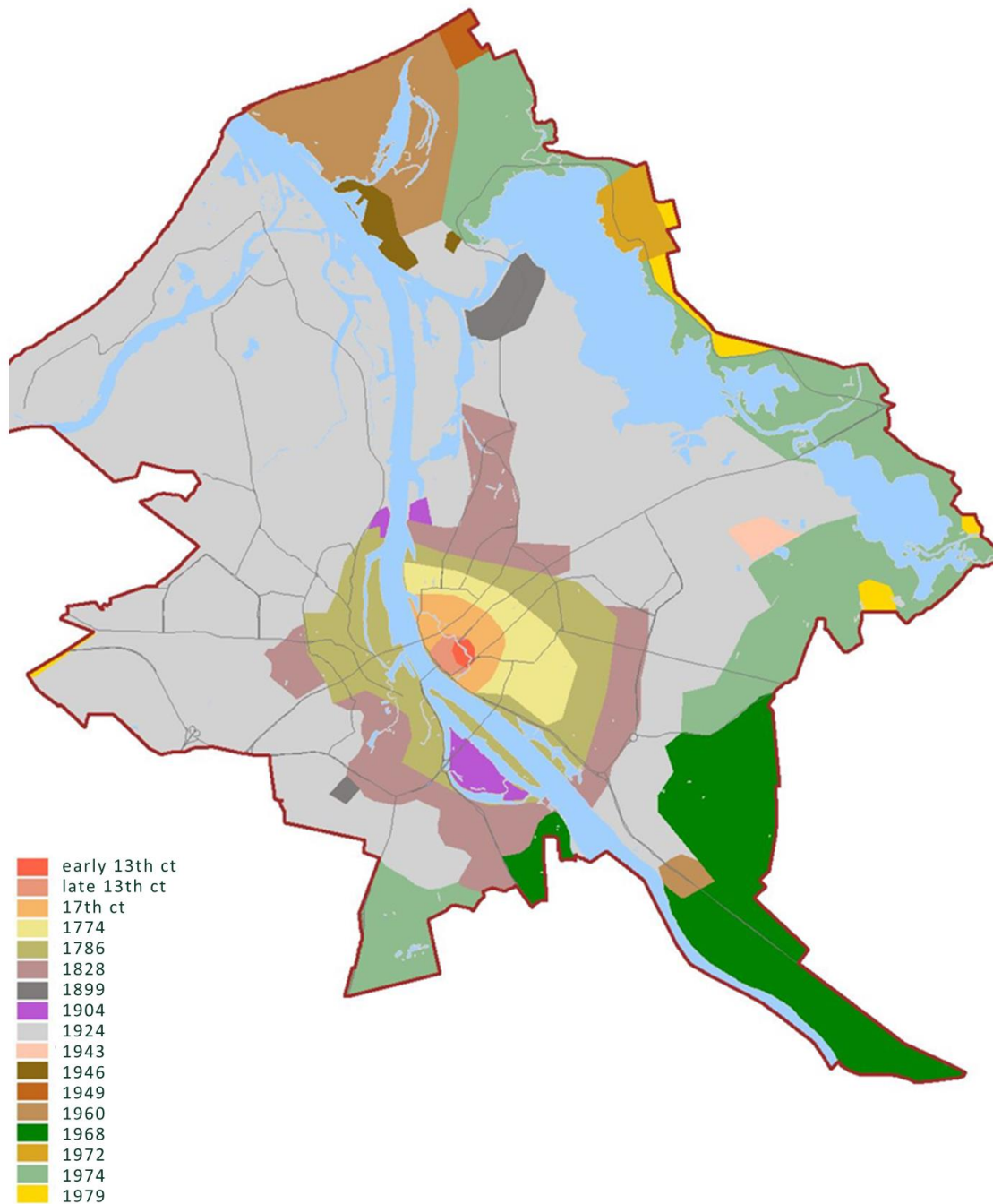


Average salary:



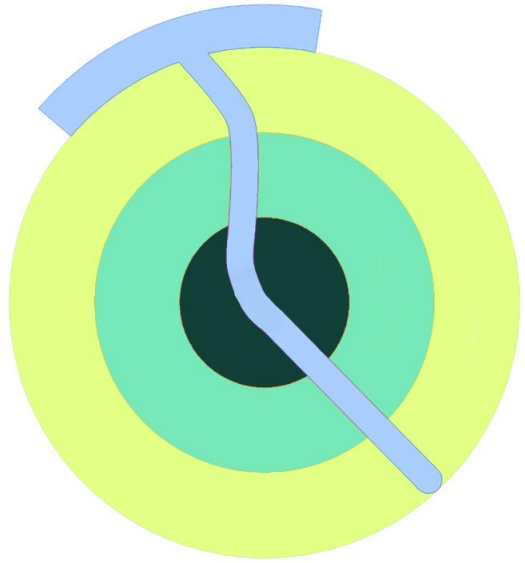
Spatial planning in Riga

Historical development of Riga's borders



Historically, Riga has developed by annexing different territories. In Riga, it is still possible to find distinct neighborhoods with their own identity and history. The main value of Riga is diversity!





- Suburbs
- Periphery
- Core

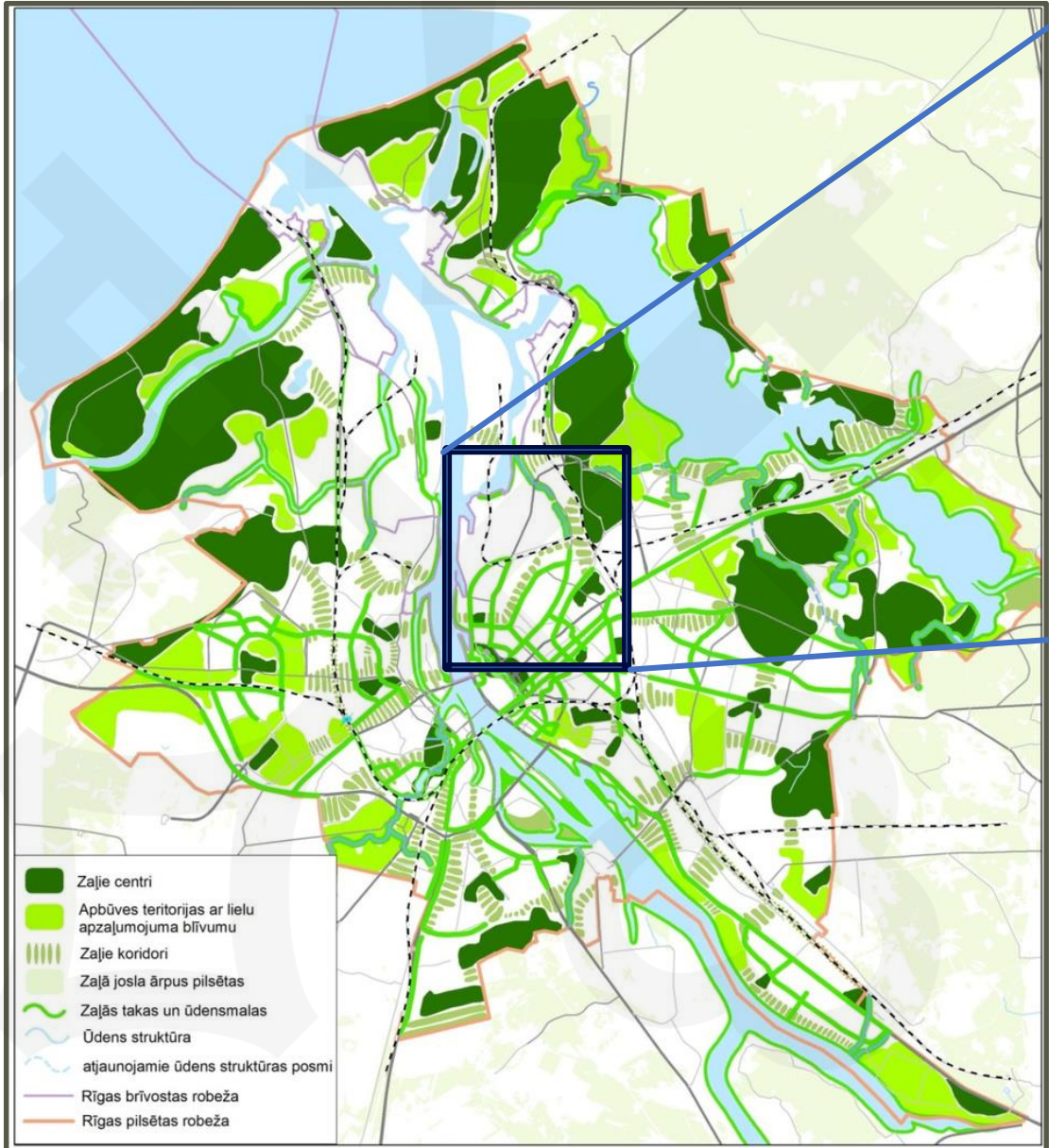
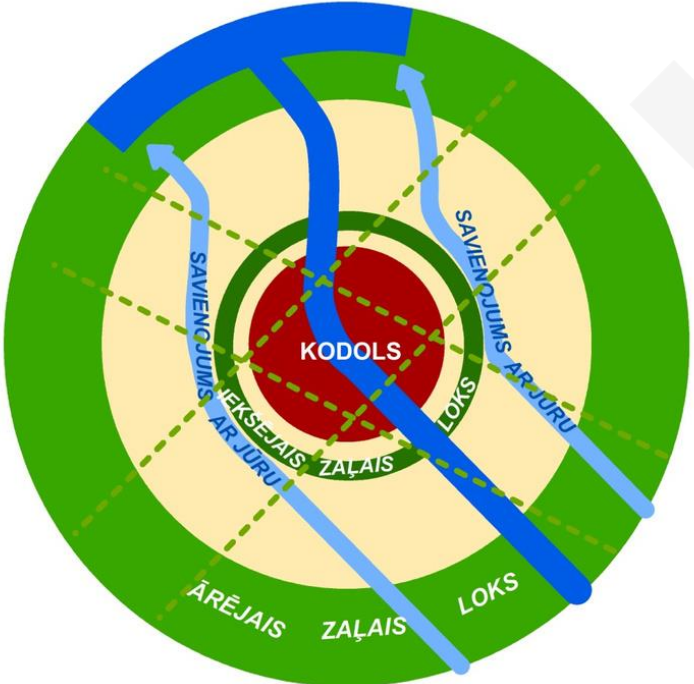


Riga's urban structure

Residential building typology



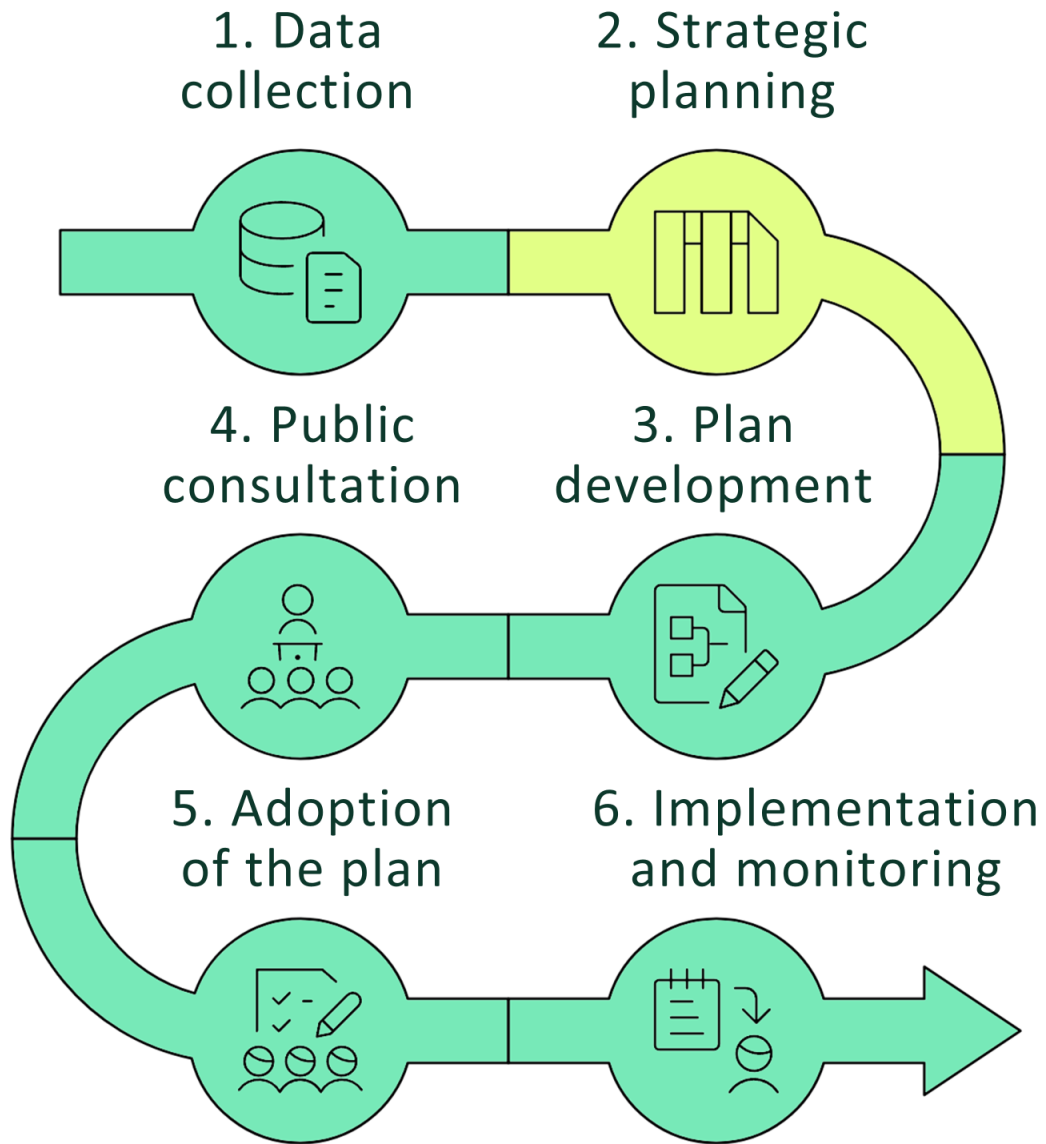
Riga's green-blue system



RIGA CITY URBAN GREENING PLAN

RIGA CITY GREENING PLAN 2027-2031





Riga Greening Plan

2027-2031

The goal of the Greening Plan is to improve Riga's resilience to climate change by creating high-quality public outdoor spaces and green infrastructure, using nature-based solutions and promoting the development of green infrastructure on the properties of residents and businesses.

Greener city

Climate resilient city

Sustainable green infrastructure

EXPECTED RESULTS

GREENER RIGA

Better and more green infrastructure in public and private properties



EXPECTED RESULTS

CLIMATE RESILIENT RIGA

Reduced heat island and
reduced stormwater influence
on cities inhabitants and
infrastructure



EXPECTED RESULTS

SUSTAINABLE GOVERNANCE OF THE GREEN INFRASTRUCTURE

**Safeguarding and promotion of
biodiversity, clear and improved
development and management of
the green infrastructure**

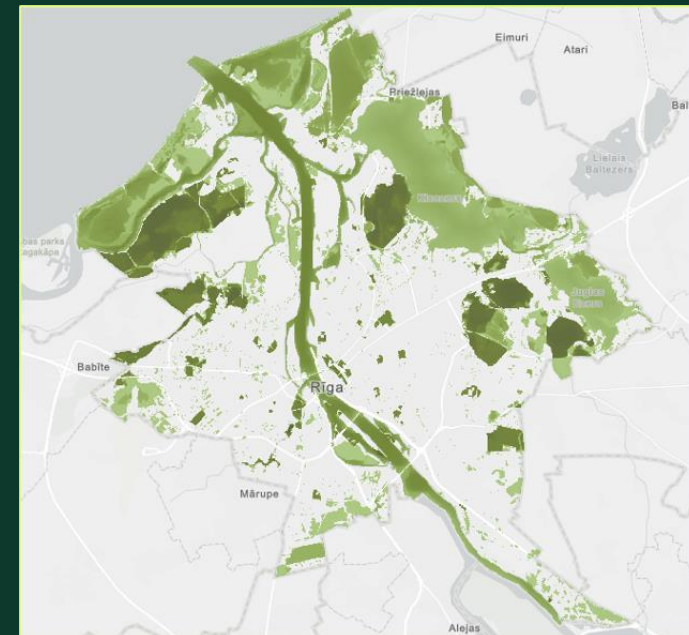
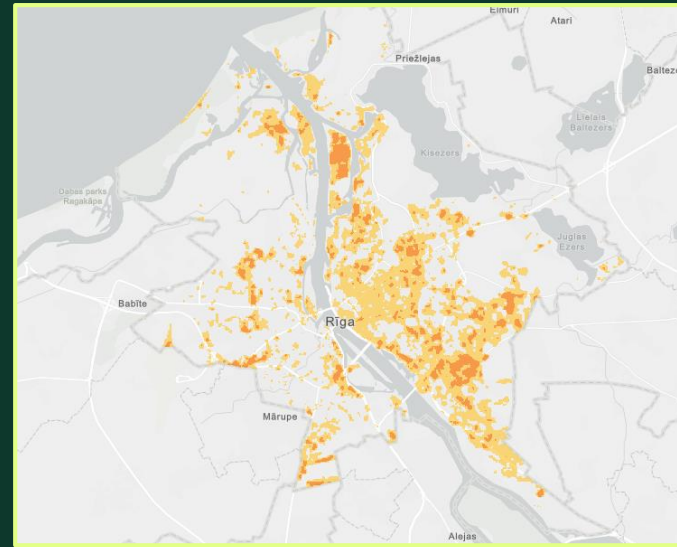


POLICIES AND MEASURES

- 40+ policies and measures identified

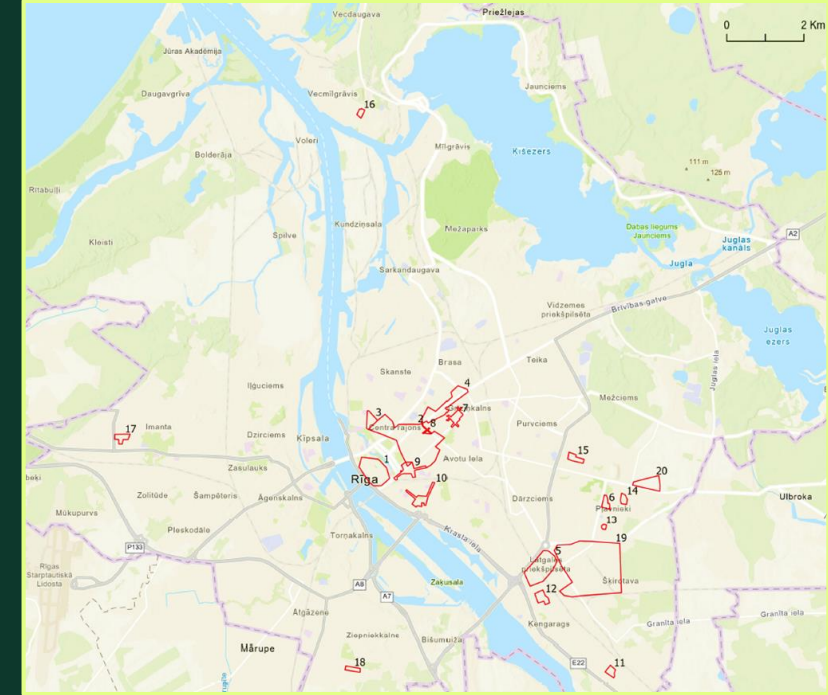
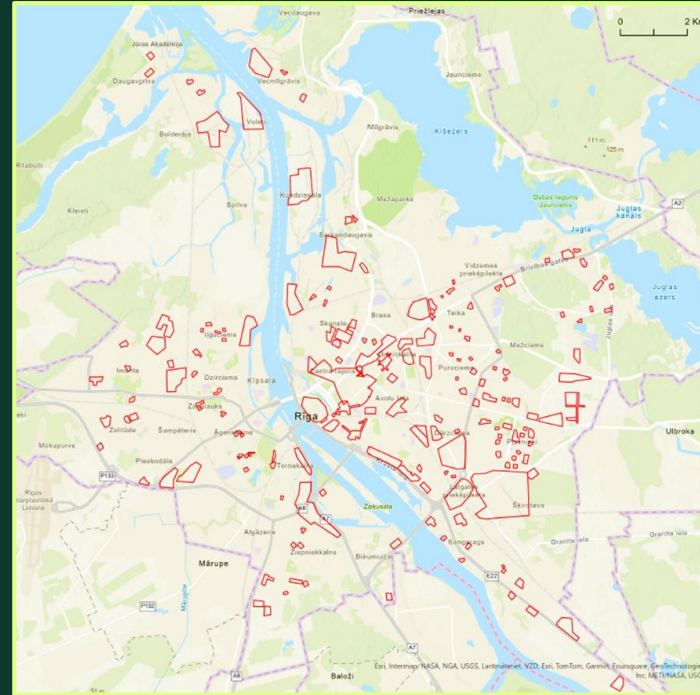
Mappings and spatial analysis

- Heat island and flood risk
- Ecological and functional effectiveness of green infrastructure



POLICIES AND MEASURES

- 186 most affected areas
- TOP 20
- Prioritization based on the number of affected residents



PILOT PROJECTS

TĒRBATA STREET

Pilot implementation of GI solutions with active involvement and education of municipal specialists and residents

- Green walls
- Green roof
- Rain gardens
- Green parklets
- Water-permeable surfaces/bio-infiltration systems

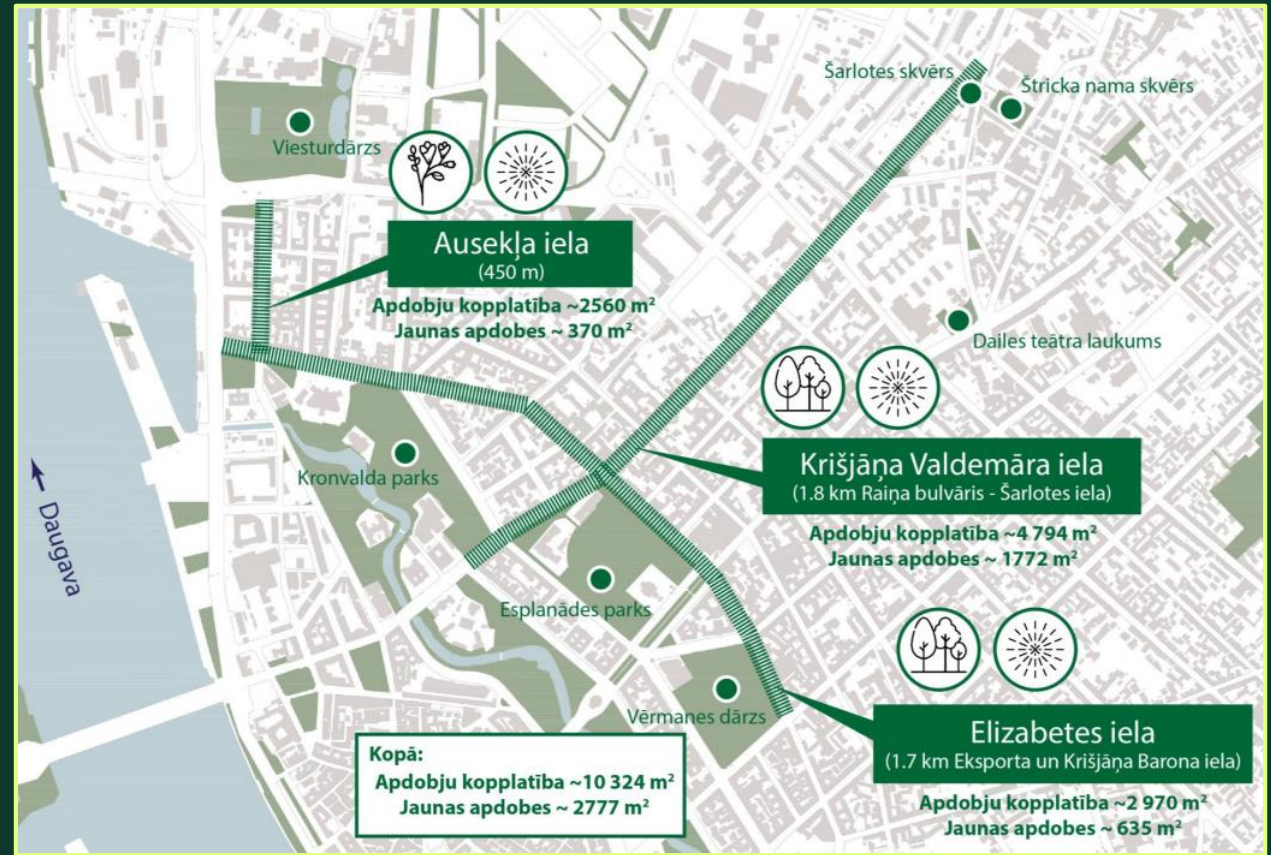


PILOT PROJECTS

Implementation of GI in Riga Historical Centre

Green corridors enhancing rainwater infiltration and accumulation in the soil

- 1.4 ha of created or upgraded GI
- Relived stormwater drainage system
- Reduced heat island
- Enhanced quality of street space (safety, environment)
- Public awareness raising





1st phase of revitalization of the Skanste area

Good environmental quality and a sustainable urban ecosystem for climate change mitigation

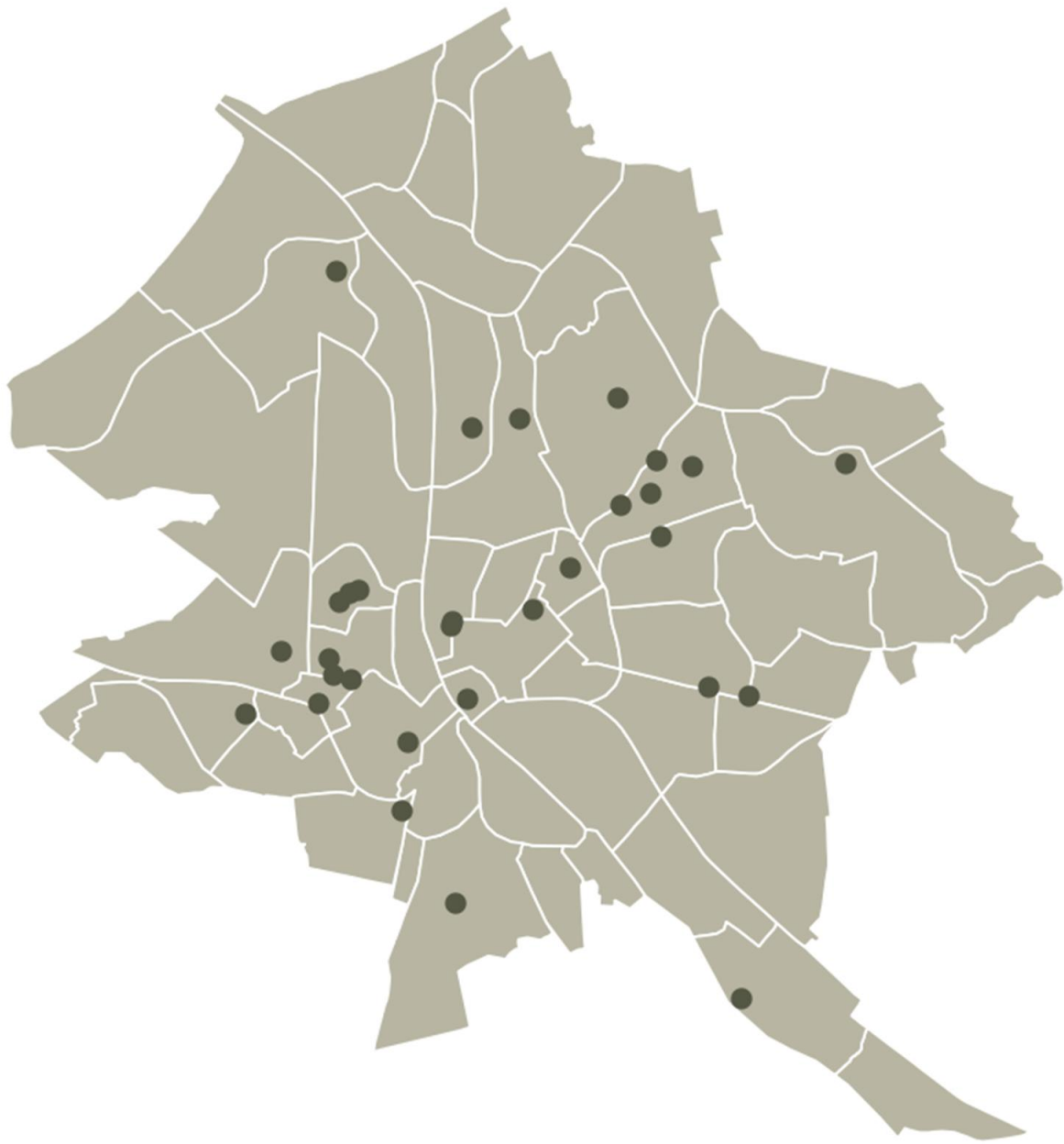
Goal: Revitalization of the Skanste brownfield site, promoting environmentally friendly and sustainable growth of the area's economic potential and the creation of new jobs.

15 ha
parks

7 ha
water and
greenery

4
new
streets

2 km
trails



● City meadow

City meadows

Good environmental quality and a sustainable urban ecosystem for climate change mitigation

42
meadows

13.7
ha

47
meadows
in 2027

15
ha
in 2027

Since 2021, 42 urban meadows have been created in various locations in Riga in collaboration with the Latvian Foundation for Nature, the City of Riga, and local neighborhood NGOs.

Soil and seed initiative

Community associations with support from the municipality undertake the enhancement of public urban spaces in their local areas

- Municipality provides practical support
- Community associations carry out environmental improvement works

Scope of the spring 2025 initiative:

- 10 community associations,
- 11 locations,
- 83.5 m³ topsoil,
- 3.3 m³ compost,
- 35.5 kg seeds



THANK YOU!

Jānis UŠČA
janis.usca@riga.lv

