



10 – 12th October, 2018

7th International Interdisciplinary Scientific Conference

SOCIETY HEALTH WELFARE

Contemporary Social Dynamics and Welfare: Urban and Rural Development Perspectives



Skin cancer screening – better safe than sorry

Marta Lange, Emilija Vija Plorina, Ilze Lihacova, Janis Spigulis
University of Latvia, Institute of Atomic physics and Spectroscopy

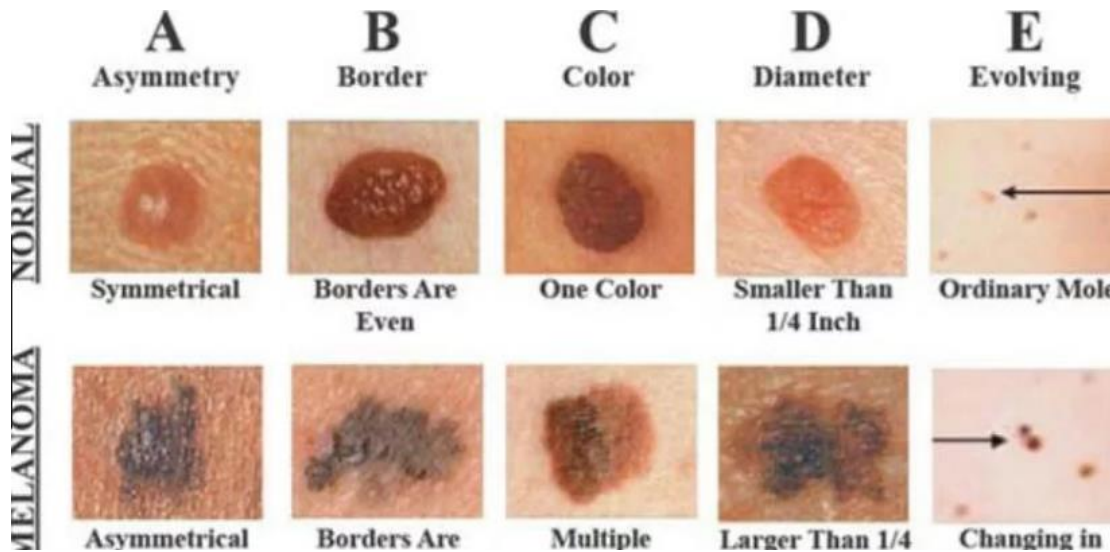
Dr. Aleksandrs Derjabo

Oncology Center of Latvia, Riga East University Hospital



What is skin cancer?

- **Melanoma** and non-melanoma: **basal cell carcinoma** (BCC), **squamos cell carcinoma** (SCC) and others.



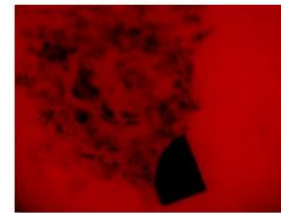
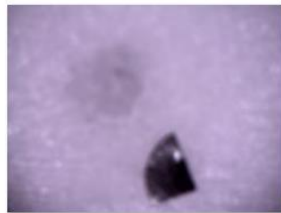
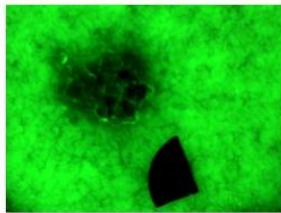
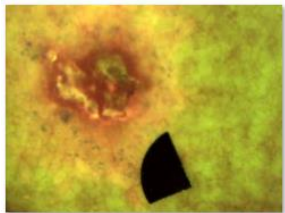
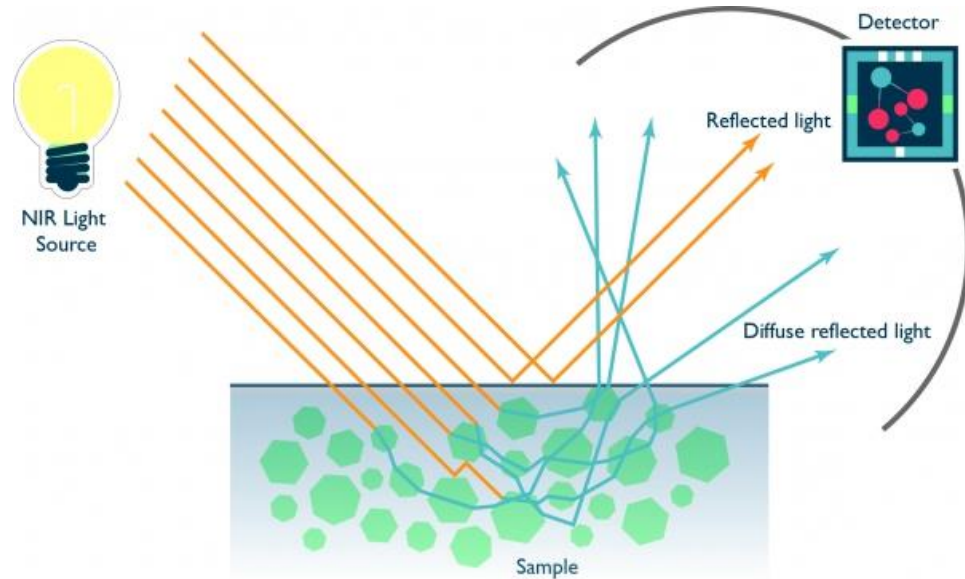
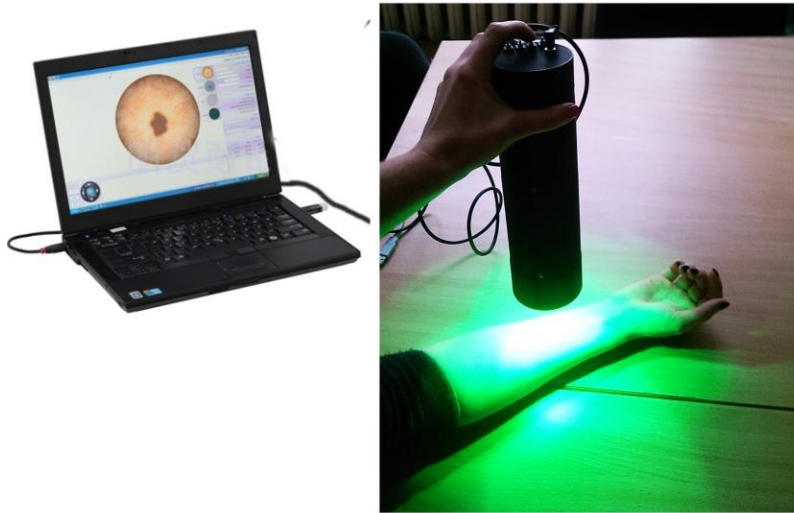
What is skin cancer?

- People who first use a **tanning bed** before age 35 **increase their risk for melanoma by 75 percent** [1]
- The vast majority of **melanomas** are caused by the sun. In fact, one UK study found that about 86 percent of melanomas can be attributed to **exposure to ultraviolet (UV) radiation from the sun** [2]
- In Latvia there are 200 new melanoma cases and 1200 other skin cancer cases yearly. [SPKC report, 2016]

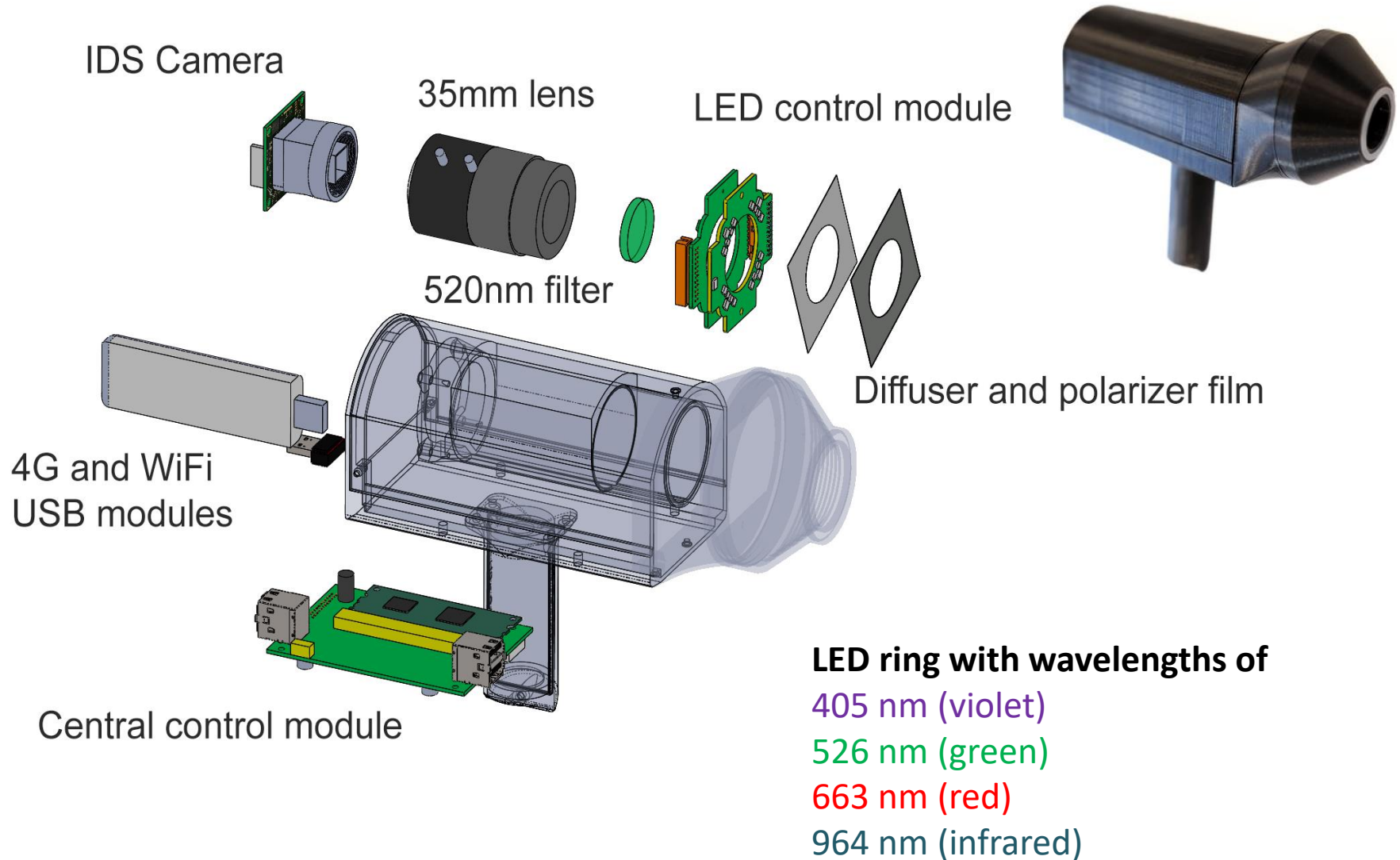
[1] The International Agency for Research on Cancer Working Group. The association of use of sunbeds with cutaneous malignant melanoma and other skin cancers: a systematic review. *Int J Canc* 2006; 120:1116-1122.

[2] Parkin DM, Mesher D, Sasieni P. Cancers attributable to solar (ultraviolet) radiation exposure in the UK in 2010. *Br J Cancer* 2011; 105:S66-S69.

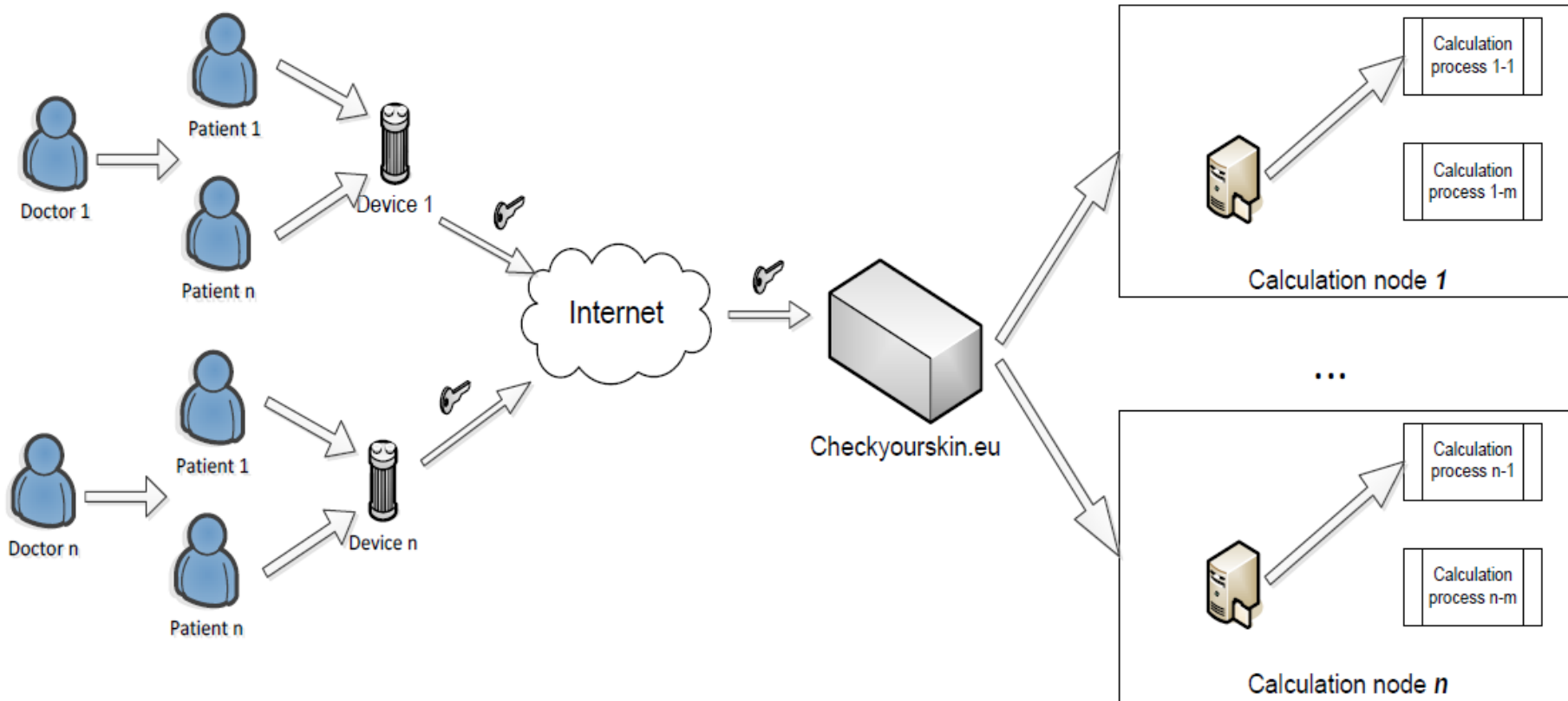
Proposed method: skin screening



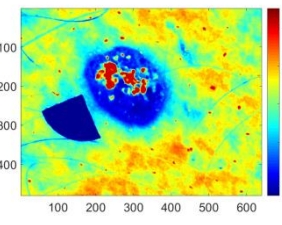
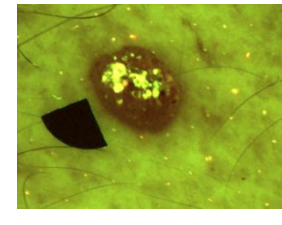
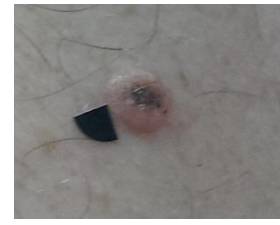
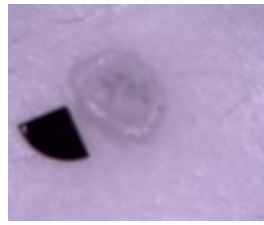
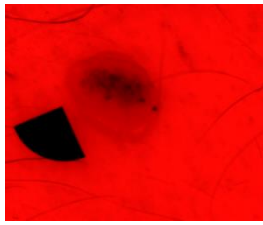
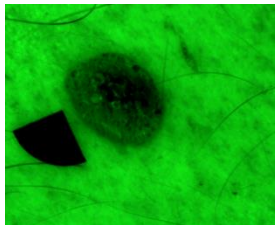
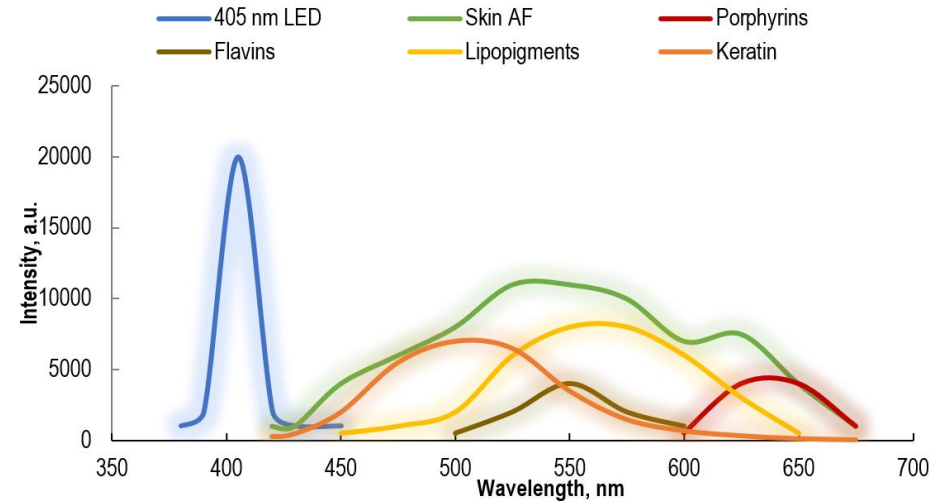
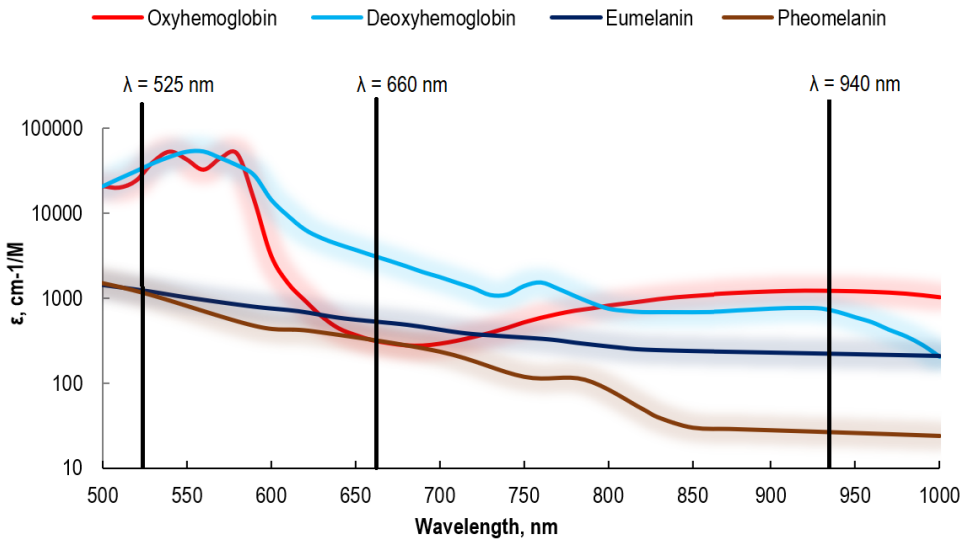
Prototype



Cloud server



Diffuse reflectance and autofluorescence

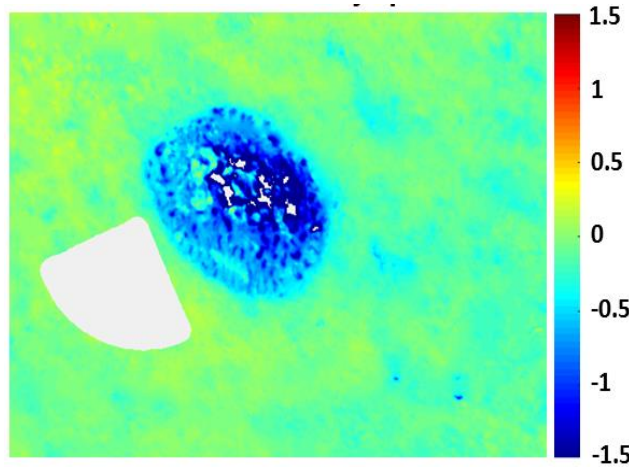


Hyperkeratosis

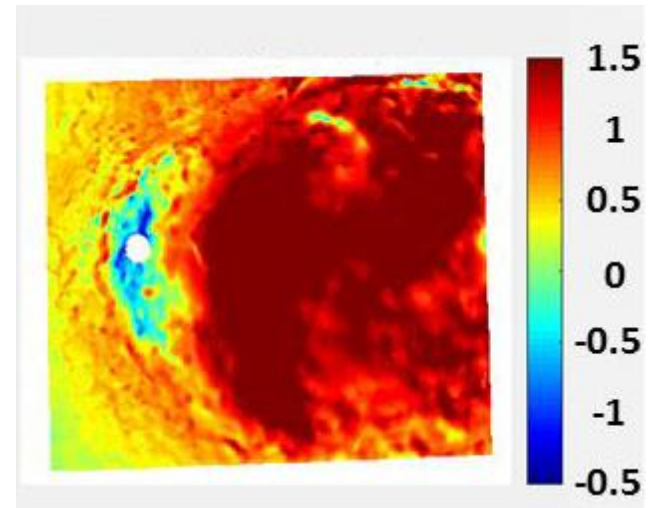
Melanoma criterion

$$p' = \lg \left(\frac{I(526) \cdot I_{skin}(663) \cdot I_{skin}(964)}{I(663) \cdot I(964) \cdot I_{skin}(526)} \right)$$

Criterion for melanoma: $p' > 1$



Benign nevus



malignant melanoma

Clinical trial results

Mean p'max of selected area inside lesion

● Malignant Melanoma ● Benign Nevus

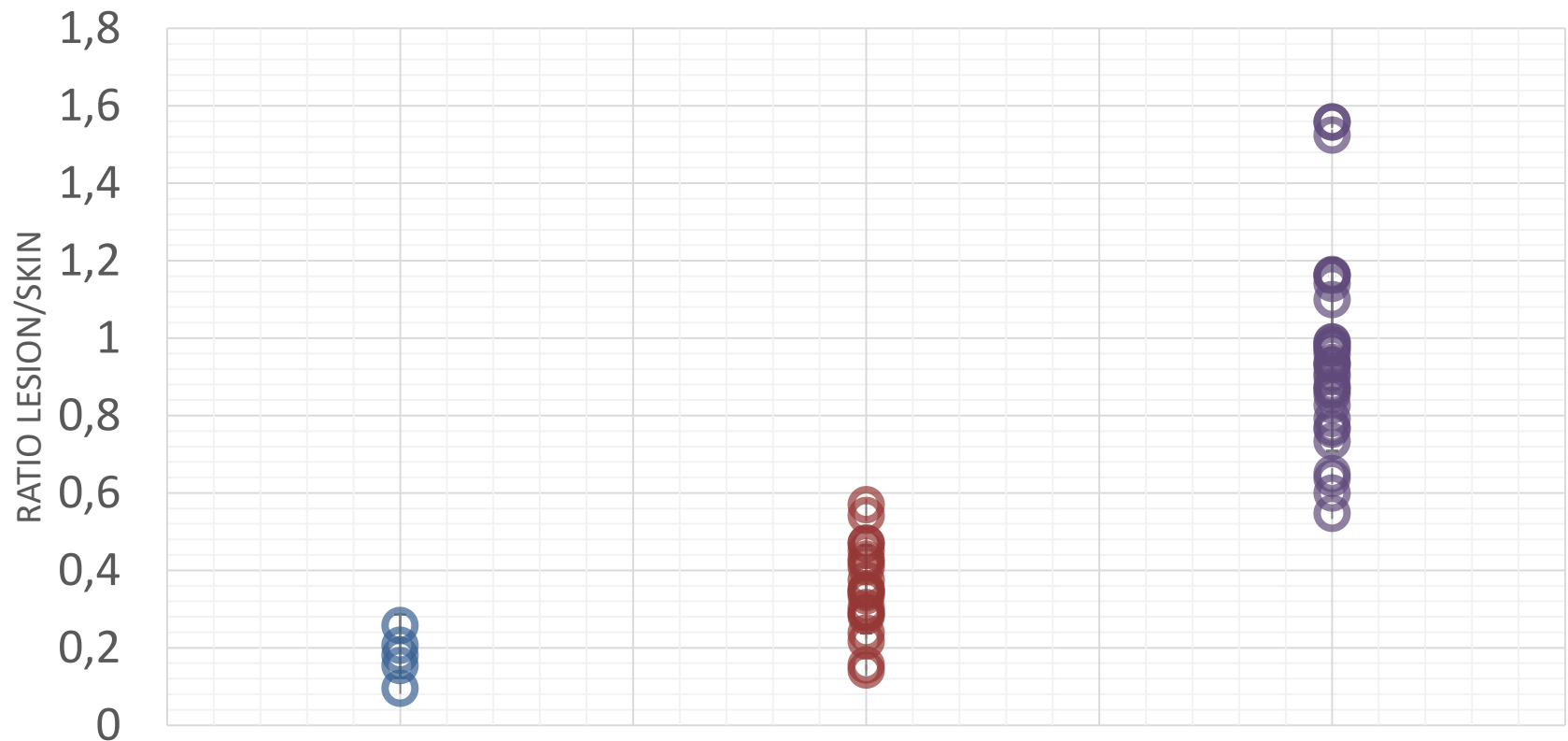


Specificity 94%

Clinical trial results

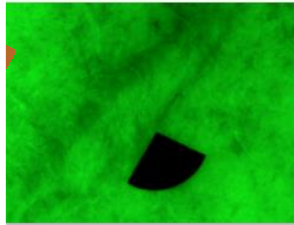
Ratio of mean AF of the lesion and the mean AF of the surrounding skin

● Malignant Melanoma ● Basal Cell Carcinoma ● Seborrheic keratosis



Specificity 96%

Future: Post-operative scar evaluation and smartphone solution



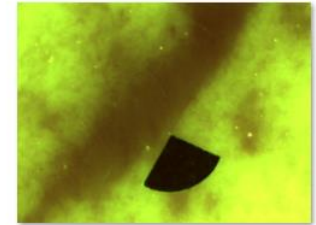
a_09-24-13_10831.png



a_09-24-22_10835.png



a_09-24-30_10839.png



a_09-24-39_10843.png



Phone with the attached LED ring

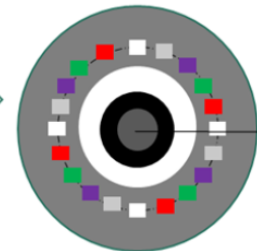
Polarizers

LEDs:

660nm
525nm
405nm (AF)
940nm
white



LED ring

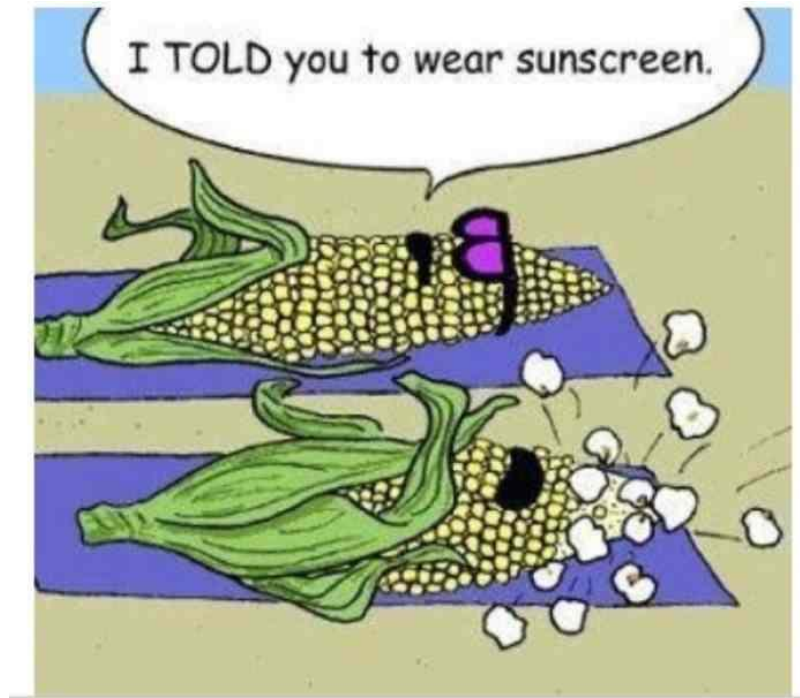


Phone camera

Conclusions

- ✓ Method is non-invasive, visual, inexpensive and easy to use
- ✓ Method for skin cancer screening at primary healthcare level
- ✓ Can be a great help to a family doctor or a general practitioner for early skin cancer diagnosis
- ✓ Possible tool for personal skin evaluation (smartphone version)
- ✓ Can be used for post-operative scar evaluation

Thank you!



Marta Lange
marta.lange@lu.lv