

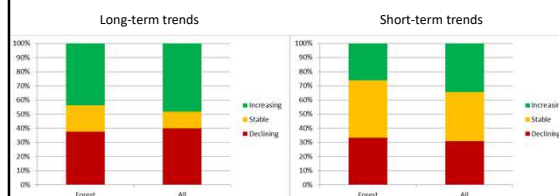
How to get on the track towards sustainable forestry in Latvia?

Viesturs Ķerus

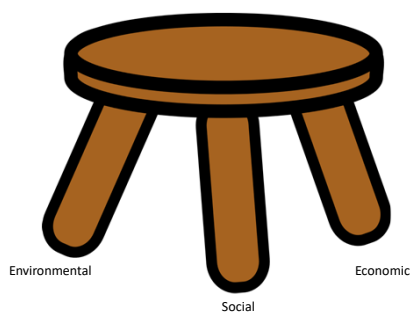


25.11.2019

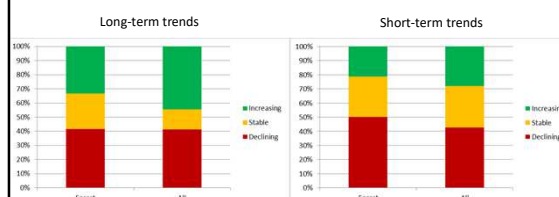
Trends of breeding bird populations



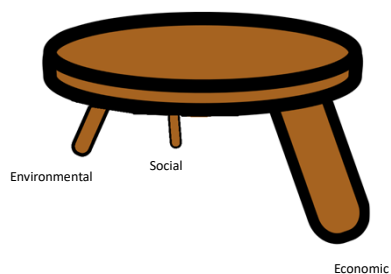
Sustainable forestry



Trends of Annex 1 breeding bird populations



Unsustainable forestry

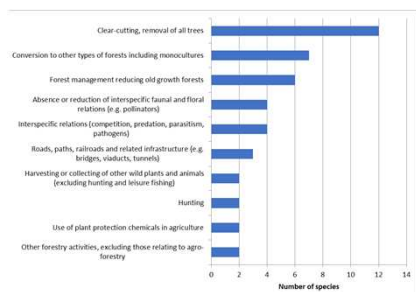


Bird species with clear population trends

Short-term trend (2005-2018)	Long-term trend (1990s-2018)		
	Decline	Stable	Increase
	Decline	Stable	Increase
Decline	8	1	1
Stable	3	5	8
Increase	1	2	8

Ciconia nigra
Coracias garrulus
Dendrocygus major
Dryobates minor
Anthus trivialis
Turdus iliacus
Poecile palustris
Loxia curvirostra

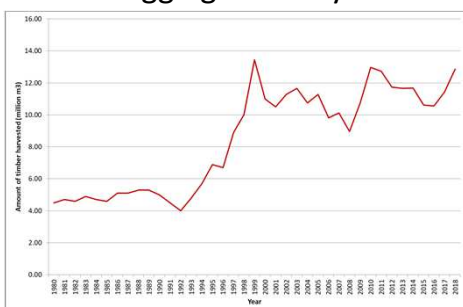
Main pressures on breeding forest birds



Fragmentation

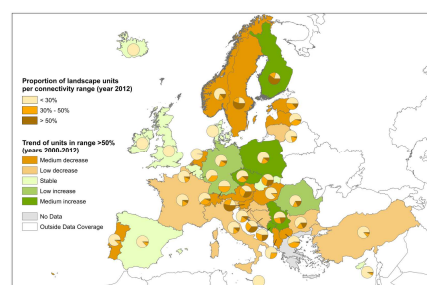


Logging intensity

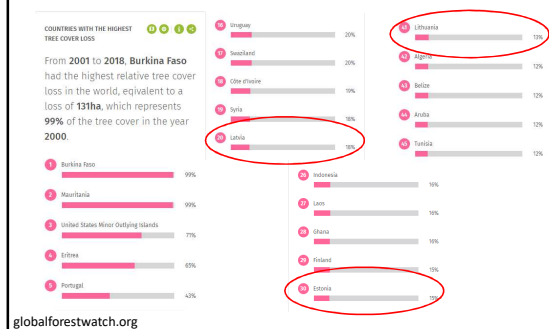


State Forest Service

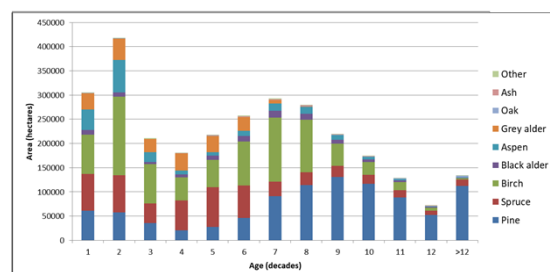
Fragmentation

European Commission-Joint Research Centre (JRC);
<http://forest.jrc.ec.europa.eu/activities/forest-pattern-fragmentation>

Relative tree cover loss from 2001 to 2018

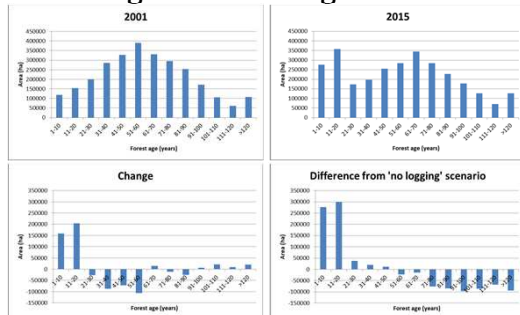


Forest age structure



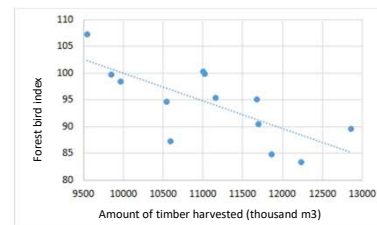
State Forest Service

Changes in forest age structure



State Forest Service

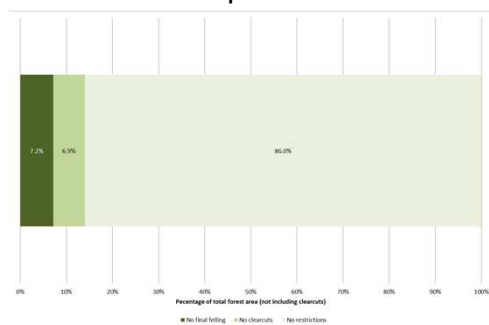
Logging intensity and common birds



$$r_s = -0.6923077;$$

$$p = 0.01115$$

Forest protection



State Forest Service

Future tasks

- Acknowledge biodiversity conservation as part of sustainable forestry
- Include the considerations of biodiversity conservation in calculations of the maximum allowed harvesting volume.
- Promote use of continuous cover forestry while preserving old-growth forests
- Employ both, land sparing and land sharing, approaches to ensure conservation of habitats for forest species
- Carry out comprehensive and purposeful monitoring of forest biodiversity

Destruction of nest sites

