

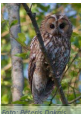





# When is it going to be enough? The Owl perspective for Latvian Woodlands

Andris Avotiņš  
Ainārs Auniņš

Problems in Biodiversity Conservation in the Baltic Forests and Possible Solution, 25.11.2019., LU Nature House

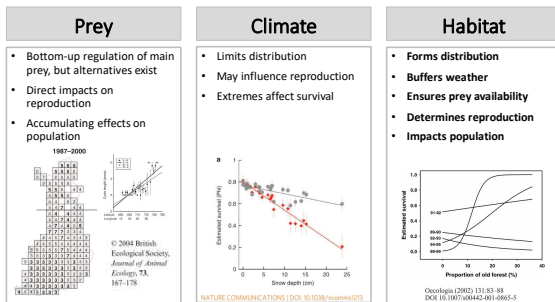
1

## Owl species regularly breeding in Latvia

						
Annex I 2009/147/EC	-	+	+	+	-	+
Specially protected	-	+	+	+	-	+
Trigger species	-	-	+	+	-	+
Indicator	+	+	+	+	+	+
Umbrella	-	+	+	+	+	+
Population trend (S/L)	+ / -	- / +	- / -	U / -	U / F	- / X

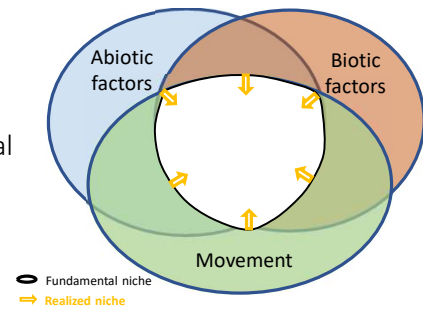
2

## Simplified system

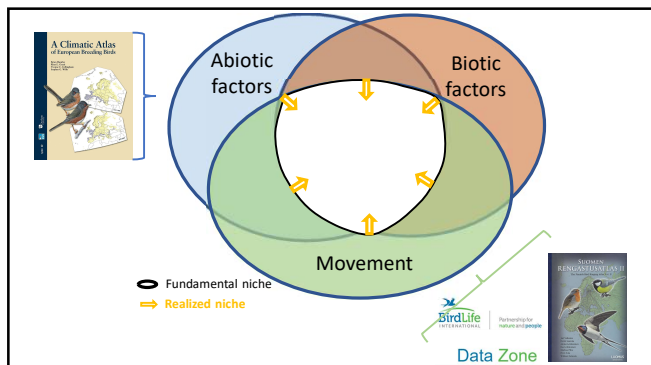


3

## Ecological niche concept

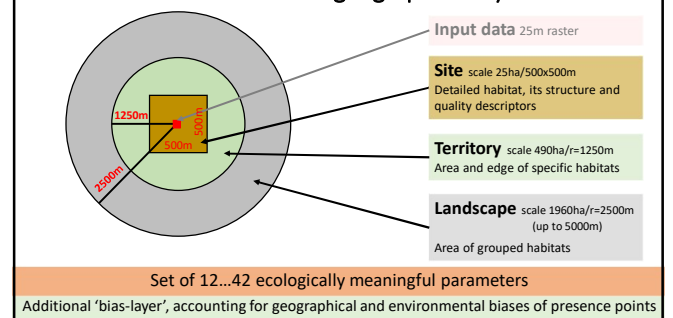


4

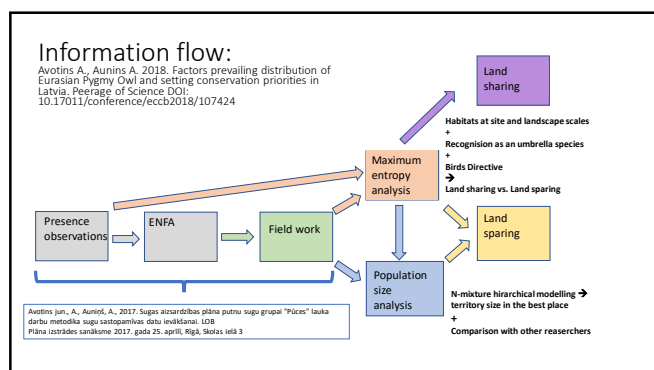


5

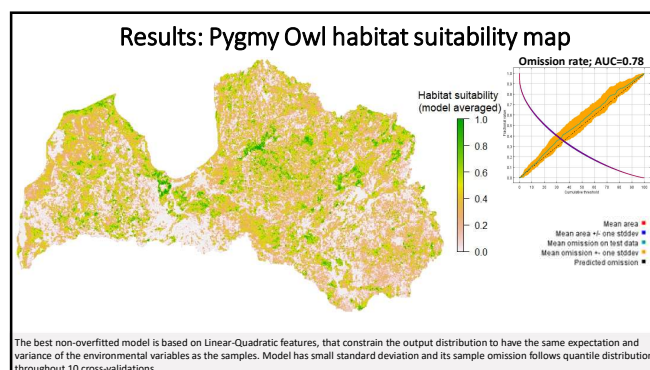
## Biotic factors: ecogeographical layers



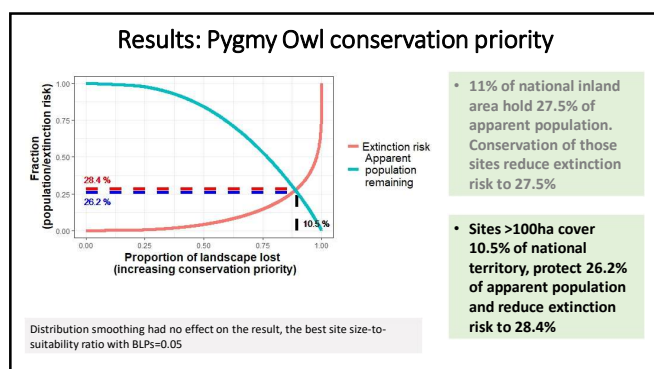
6



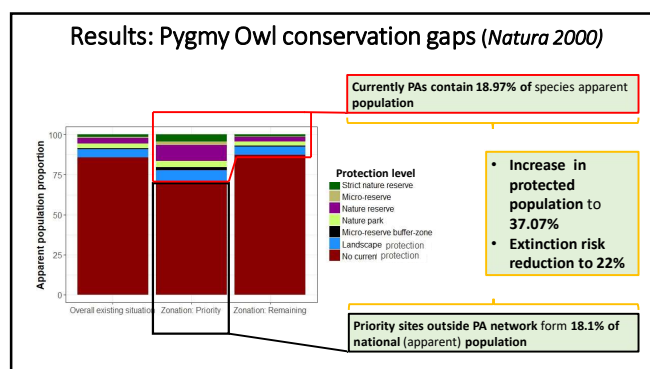
7



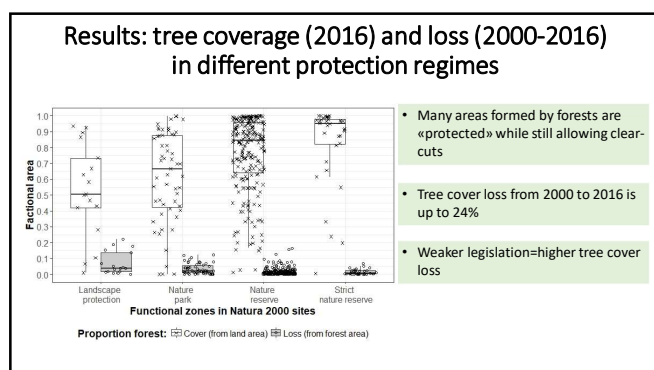
8



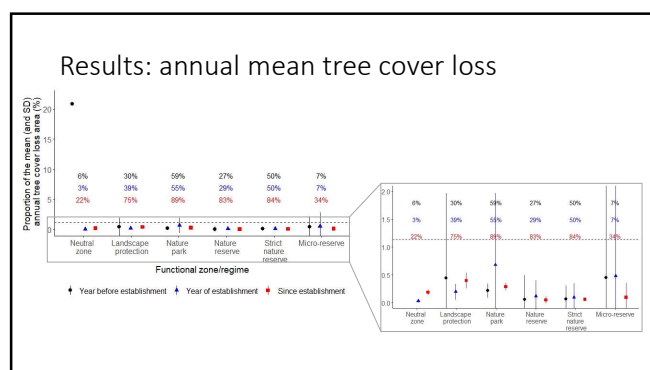
9



10

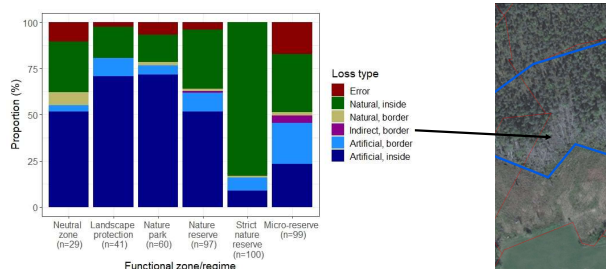


11

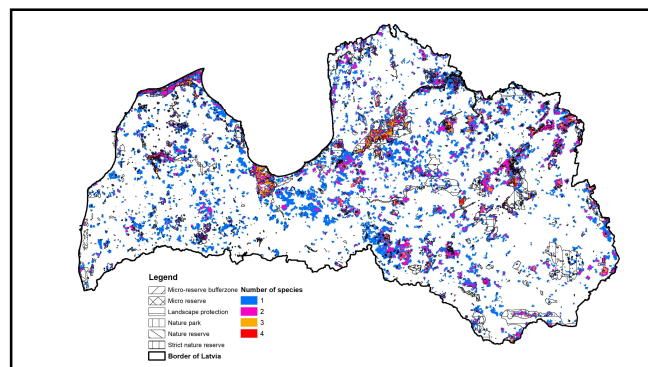


12

### Results: types of the tree cover loss since establishment



13



14

### Owls and forests

# species	Land %	% no GLAPAS	% no AEGFUN	% no STRURA	% no BUBBUB	Land % non-protected
1	12,03	63,71	26,01	49,72	56,62	11,60
2	3,59	27,46	45,41	39,02	24,56	3,15
3	0,90	8,14	26,36	9,80	14,65	0,55
4	0,0007	0,69	2,21	1,46	2,17	0,00008

To protect forest dwelling owls 16,6% must be managed for forest specialist conservation, increasing PA's by 15,32% of the land

15

### Species-specific risks «under assumptions»



Scenario	% pop	Risk %	% pop	Risk %	% pop	Risk %	% pop	Risk %
Species itself	26,2	28,4	27,1	27,8	27,5	27,5	28	28
+ other species	37,1	22	56,2	13,4	47,0	17,2	43,6	18,7
+ Natura 2000	43,2	18,9	62,5	11,1	52,5	14,9	51,5	15,3

16

### Thank You!



Geodatabases for environmental data preparation were received from Nature Conservation Agency and ecogeographical parameters were created as a part of conservation activity plan for owls in Latvia.

Data analysis and interpretation of the results was done within the state research program 'The value and dynamic of Latvia's ecosystems under changing climate'.

17