

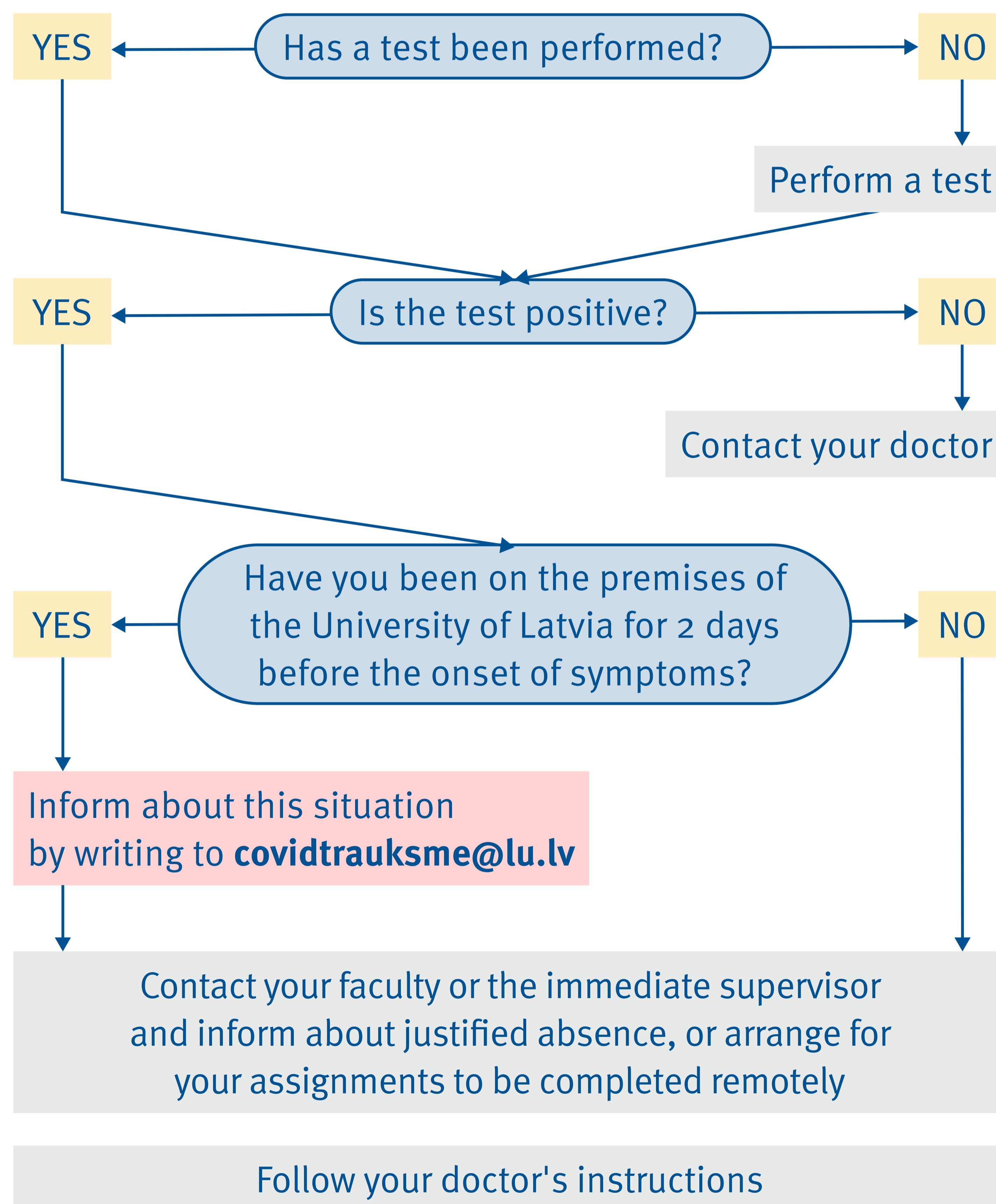


UNIVERSITY OF LATVIA

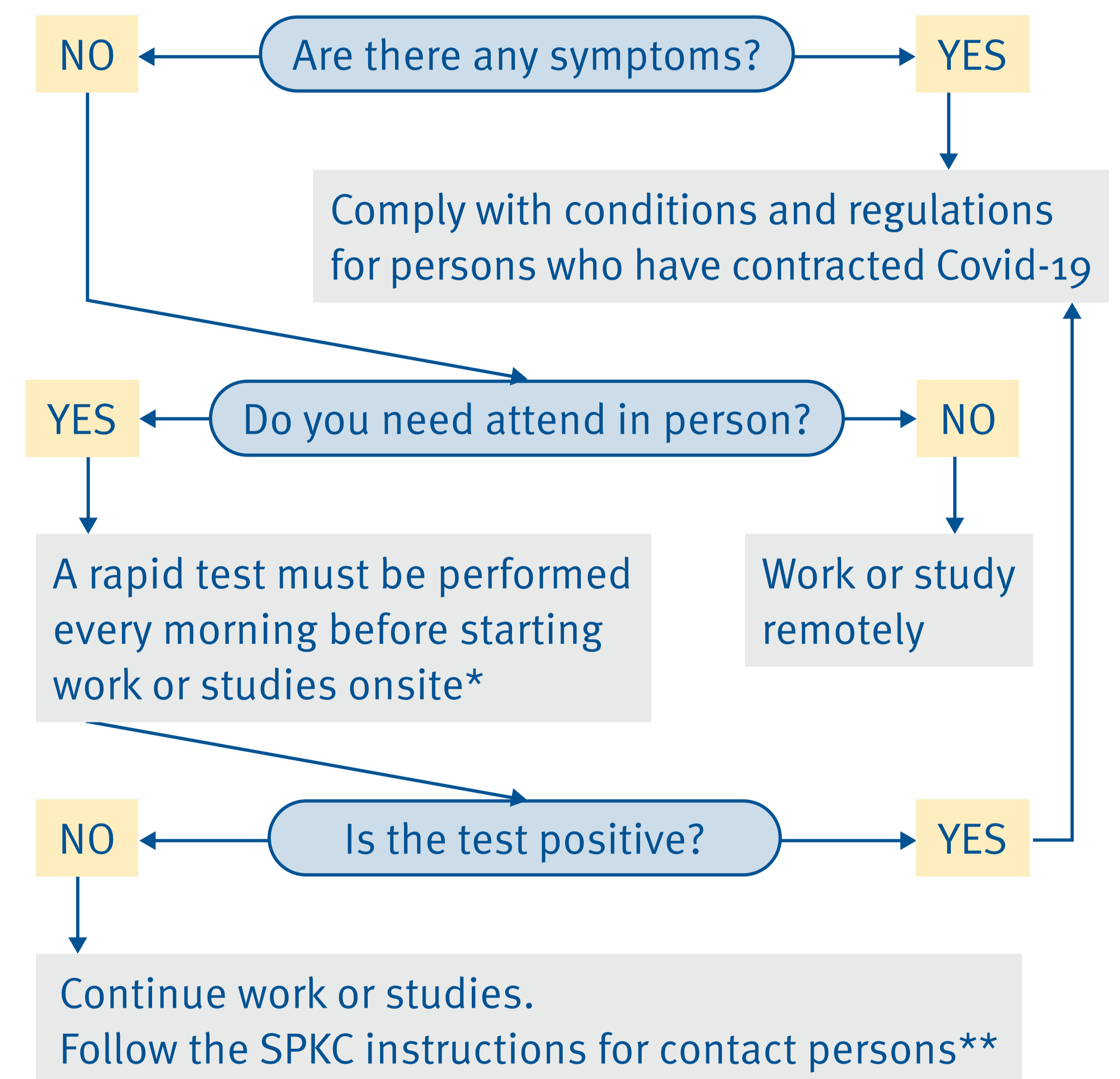
# How to act in case of experiencing Covid-19 symptoms or if you were in contact with someone infected with Covid-19?

More information about safety measures [here](#)

## Symptoms of illness



## Contact persons



\* Rapid tests for employees for this purpose are provided by the University of Latvia. For students tests are provided in exceptional cases, subject to approval by the dean.

\*\* If the patient and the contact person are from the same household, the number of days indicated are counted from the moment the patient is allowed to end the isolation. These are usually 10 additional days. In this situation, there is also a higher risk of cross-infection.

**A person may not enter any premises of the University of Latvia if he/she has symptoms of the illness!**