



79th



International
Scientific
Conference of
the University
of Latvia

Analysis of emergency medical care calls of Nur- Sultan polyclinics population

Authors: *Ganzhula Yulia, Urazova Saltanat,
Ashirmatova Issida, Alzhanova Kulyash*

Summary

Background. Emergency care of Nur-Sultan is provided by teams that consist of two medical assistants and a driver of ambulance vehicle. Assistance is provided for calls of the fourth category of urgency.

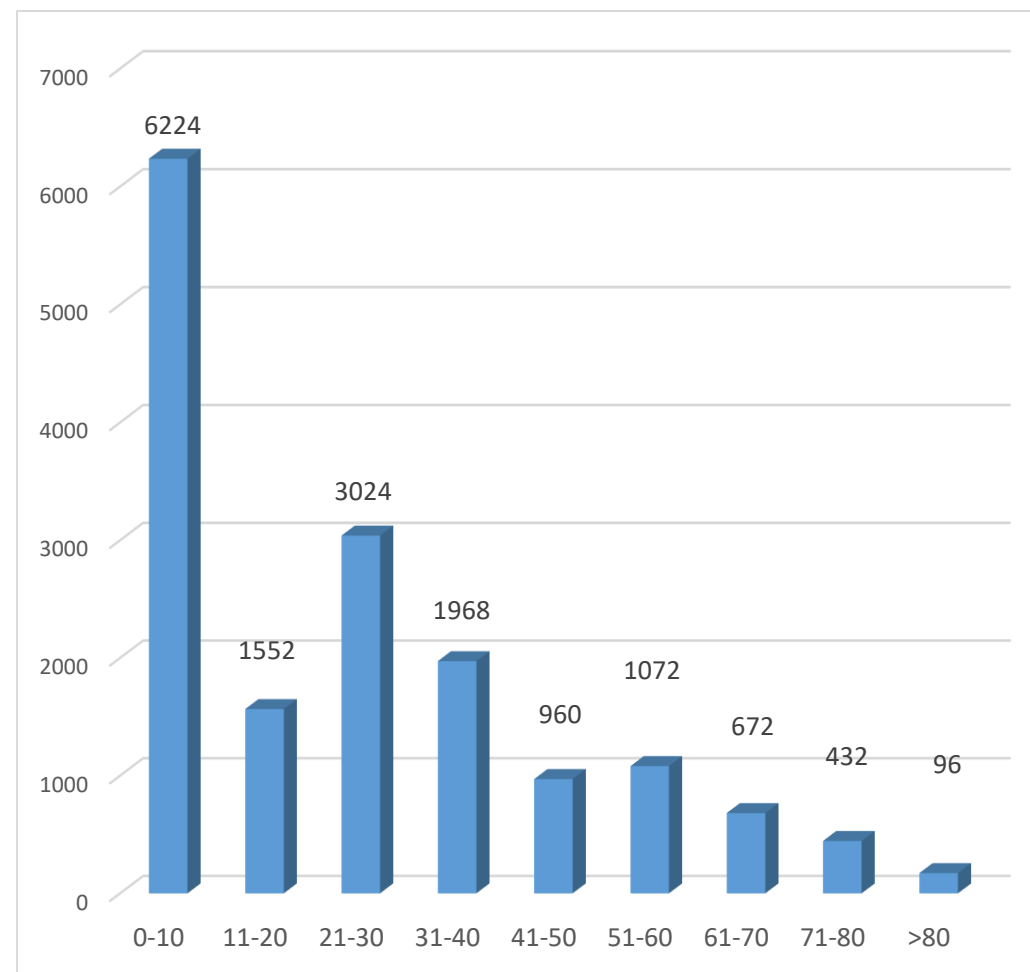
Aim. The main objective of the substation is to provide the population that is attached territorially to primary health care centres with round-the-clock timely and qualified emergency medical care for both adults and children.

Methods. In this study, the analysis and structure of the circulation of the attached population were carried out for the period from 01.01.2018 to 01.01.2019.

Analysis results

Gender analysis revealed that female patients account for 9600 (60%), male patients – for 6400 (40%) of the number of emergency responders.

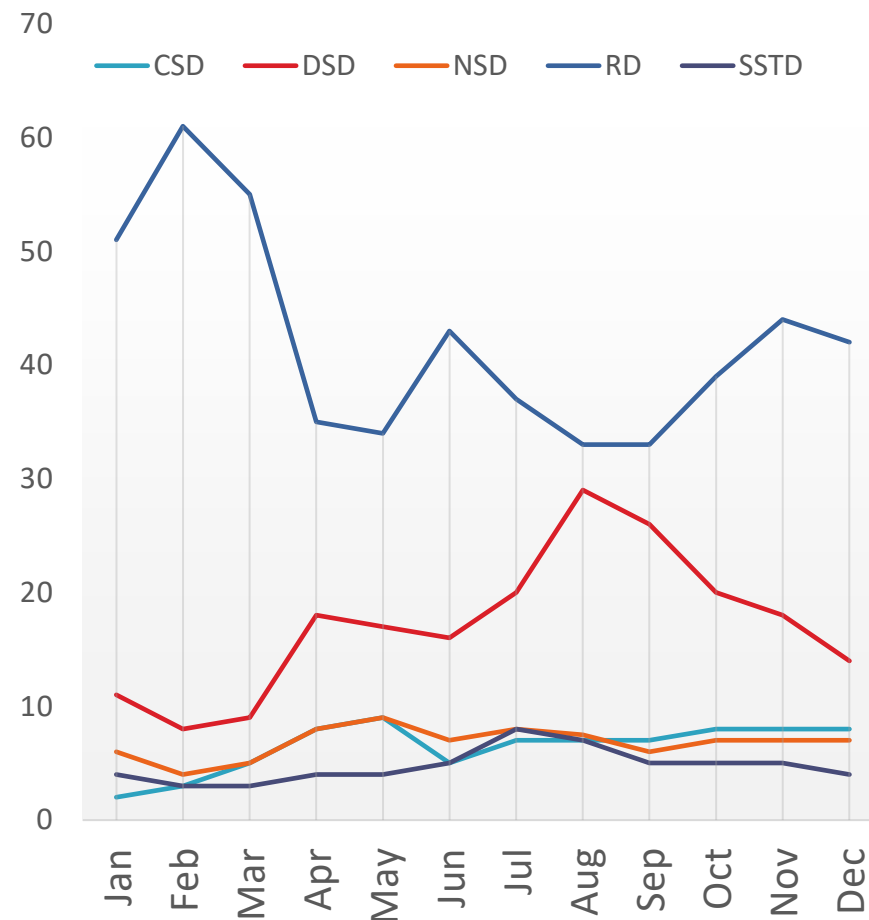
6224 (38.9%) calls were made in cases where patients were in the age range between 0 and 10 years, 1552 (9.7%) – between 11 and 20 years, 3024 (18.9%) – between 21 and 30 years, 1968 (12.3%) – between 31 and 40 years, 960 (6%) – between 41 and 50 years, 1072 (6.7%) – between 51 and 60 years, 672 (4.2%) – between 61 and 70 years, 432 (2.7%) – between 71 and 80 years, and 96 (0.6%) – 80 years old and above.



Analysis results

Analysis of the structure revealed 5 main classes of diseases, which are 78% of all the causes for ambulance calls during the aforementioned period:

- respiratory diseases (**RD**): 33-61% of the total number of call causes. The peak is distinct from January to March;
- digestive system diseases (**DSD**): 8-29%. The peak can be noticed from July to September;
- nervous system diseases (**NSD**)- 5-8%;
- circulatory system diseases (**CSD**)- 5-8%;
- skin and subcutaneous tissue disease (**SSTD**) - 3-8%. The peak is distinguished on July and August.



Conclusion

This result matches the fourth category of calls, because it involves assisting in the absence of diseases with an immediate threat to the patient's life. On calls of the fourth category of urgency, assistance is provided by the ambulance station of primary health care. Respiratory diseases prevail in the structure of ambulance calls.