

Veteranisation

Green Infrastructure in time and space



Anna Stenström

County Administration of Västra Götaland,
Sweden

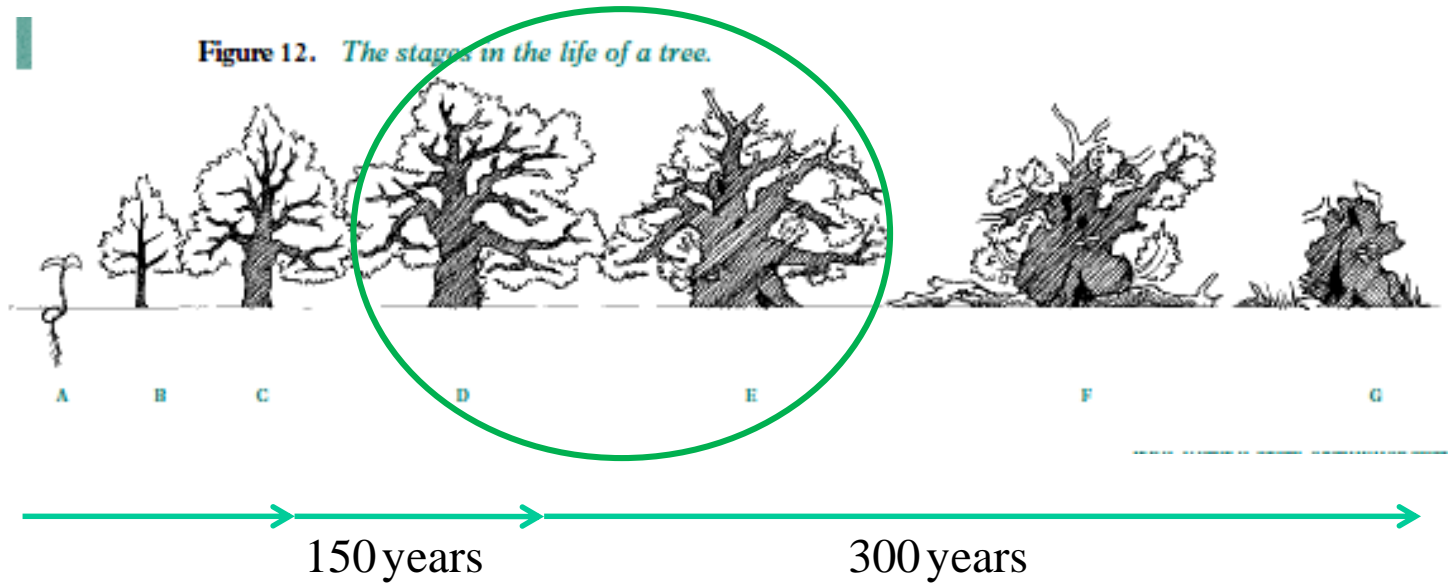
Old trees are popular habitats

- A lot of rare species
 - 700 -800 redlisted species
 - 1300 species
- Every tree has many different habitats
 - Holes and cavities
 - Sunlit bark
 - Damp areas
 - Dead wood
 - Branches in the crown
 - Sap flows



Life of a tree

Figure 12. *The stages in the life of a tree.*



18% of wood living
beetles are threatened

Need more habitats!



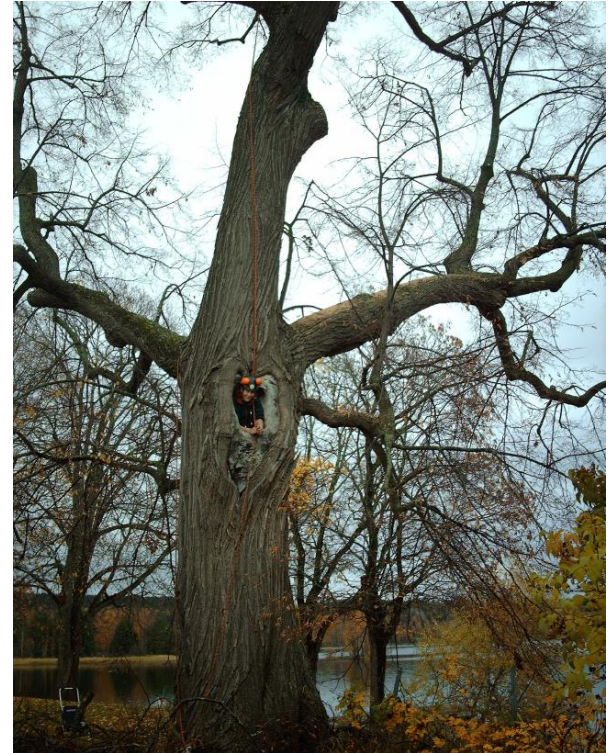
Common situations

- Too small population of old trees
- Need to connect populations of old trees
- Generation gap



A tree is not just a tree

- Habitats appears at 200-250 years old trees
- Takes 250 years to create an old tree



Veteranisation

Making the structures naturally created by:

- storm
- lightning
- grazing animals
- woodpeckers
- Making structures of old trees in young trees = creating habitats



Photo: Annika Lydäng



How it is done

- Usually arborists
- Young trees, 25-40 cm diameter
- Same tree species
- Avoid trees close to paths, houses etc





Photo: Vikki Bengtsson



Photo: Kenneth Claesson



Photo: Annika Lydäng



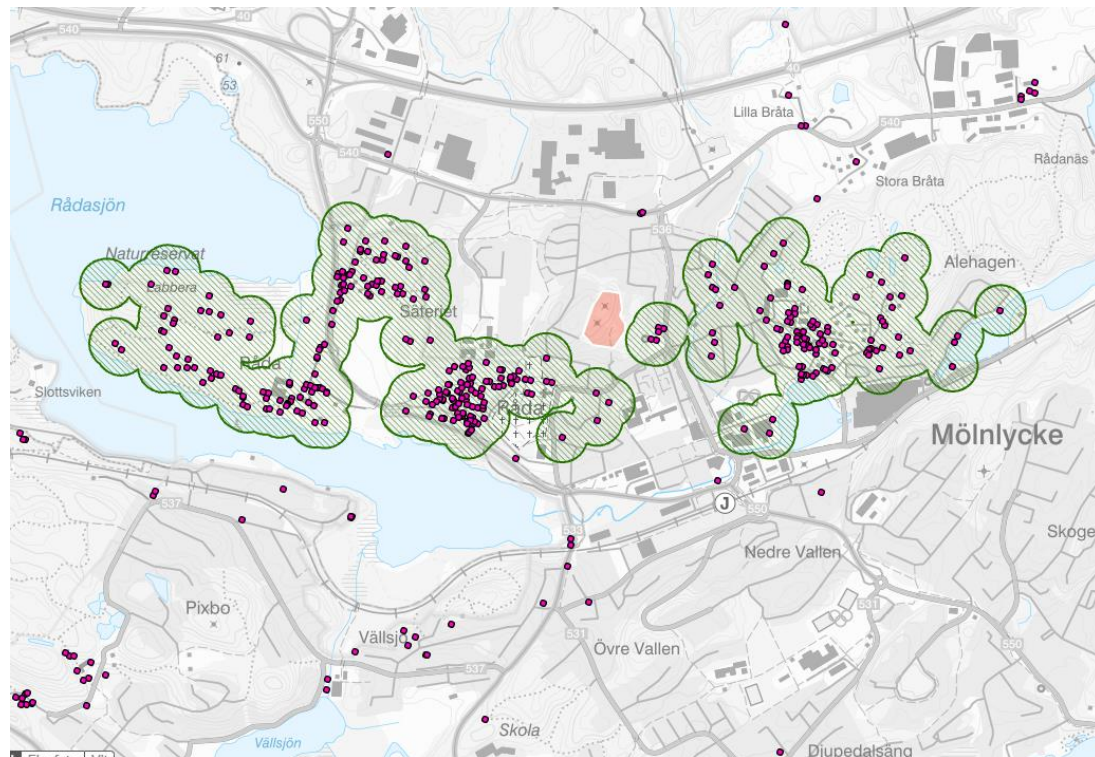
Photo: Vikki Bengtsson



Photo: Henrik Malm

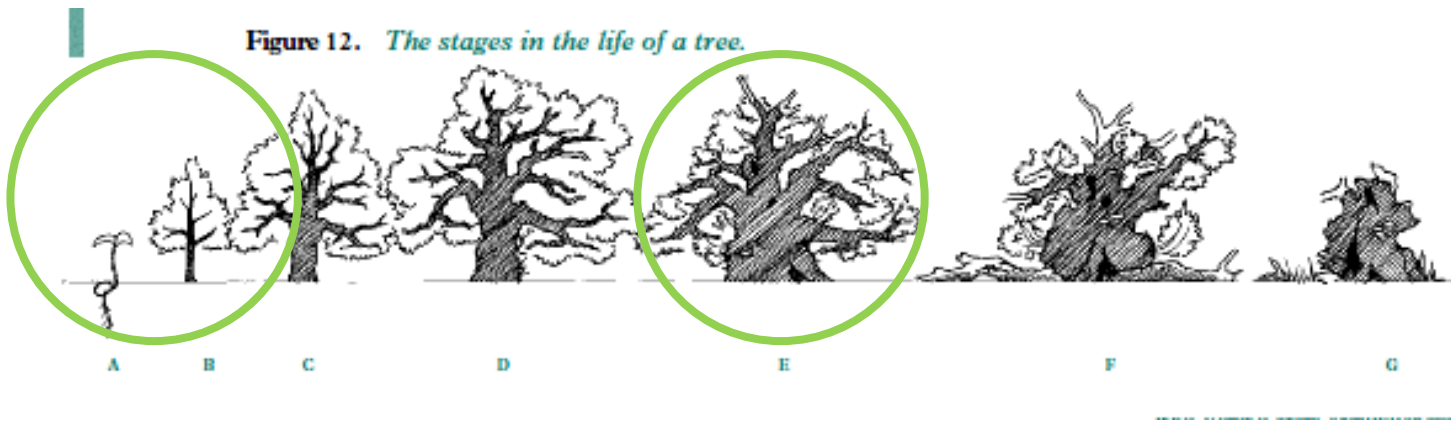


Green Infrastructure



Green Infrastructure in time

- Common situation in protected areas in Sweden.
- Old trees are protected, but no medium aged trees.
- The old trees will die before the next generation have the habitats.



Does it work?

- More bats
- More hole-nesting birds
- More redlisted beetles
- More social hymenoptera

- Succession of species, need monitoring after 50+ years

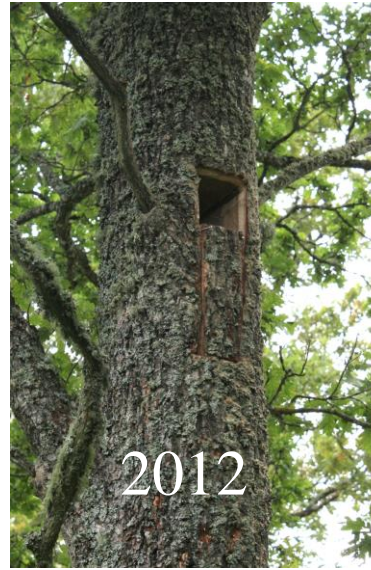


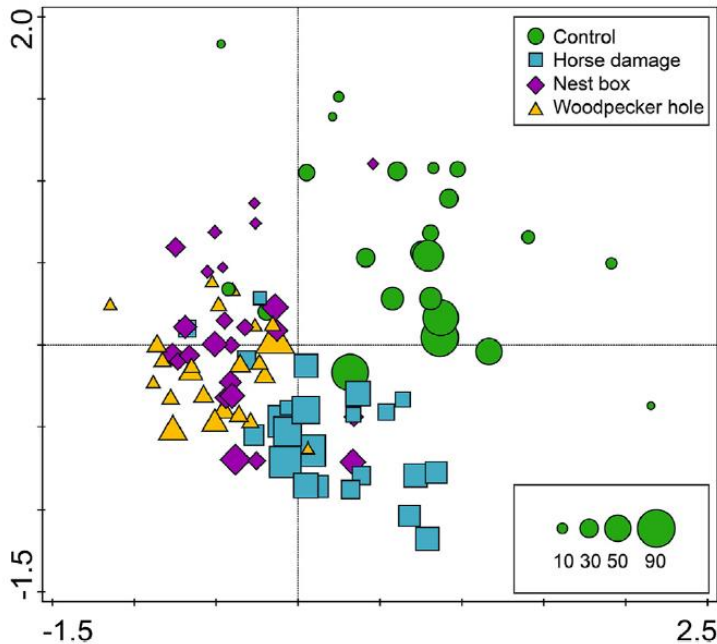
Photo: Vikki Bengtsson



Photo: Vikki Bengtsson



Wood fungi



- 20 most abundant 78%
- 700 species
- Control trees 8 times less sequences
- Menkis et al (2022). Endophytes dominate fungal communities in six-year-old veteranisation wounds in living oak trunks. Fungal Ecology. <https://doi.org/10.1016/j.funeco.2020.101020>.



When do we not do it?

- Few young trees
- Permission of the landowner
- Can not create all habitats
- Never a replacement for old trees!



Thank you for listening

