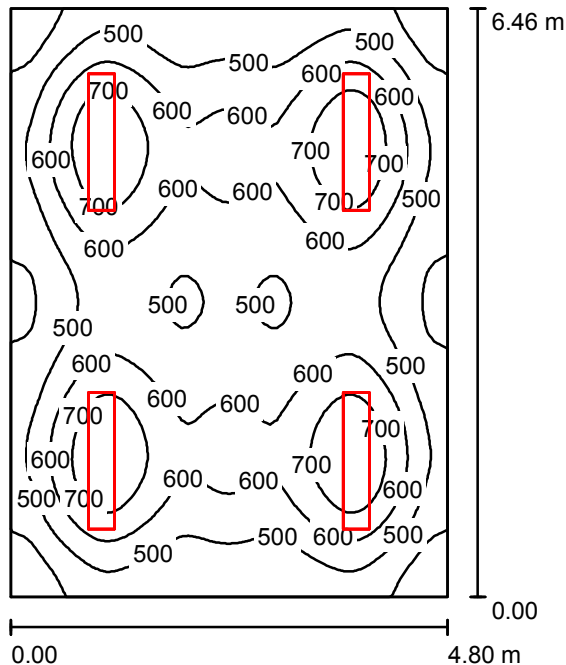


Operator
Telephone
Fax
e-Mail

Pētnieku darba telpa / Summary



Height of Room: 3.000 m, Mounting Height: 3.000 m, Maintenance factor: 0.80

Values in Lux, Scale 1:83

Surface	ρ [%]	E_{av} [lx]	E_{min} [lx]	E_{max} [lx]	u_0
Workplane	/	559	318	805	0.569
Floor	20	489	302	602	0.617
Ceiling	70	110	81	120	0.737
Walls (4)	50	250	95	542	/

Workplane:

Height: 0.750 m
Grid: 64 x 64 Points
Boundary Zone: 0.000 m

UGR

Left Wall
Lower Wall
(CIE, SHR = 1.00.)

Lengthways-

13
12

Across

17
18

to luminaire axis

Illuminance Quotient (according to LG7): Walls / Working Plane: 0.463, Ceiling / Working Plane: 0.197.

Luminaire Parts List

No.	Pieces	Designation (Correction Factor)	Φ (Luminaire) [lm]	Φ (Lamps) [lm]	P [W]
1	4	Glamox C51-S 249 SLS - 2x49W T5 49W HO (1.000)	6782	8600	103.0
			Total: 27126	Total: 34400	412.0

Specific connected load: $13.29 \text{ W/m}^2 = 2.38 \text{ W/m}^2/100 \text{ lx}$ (Ground area: 31.01 m^2)