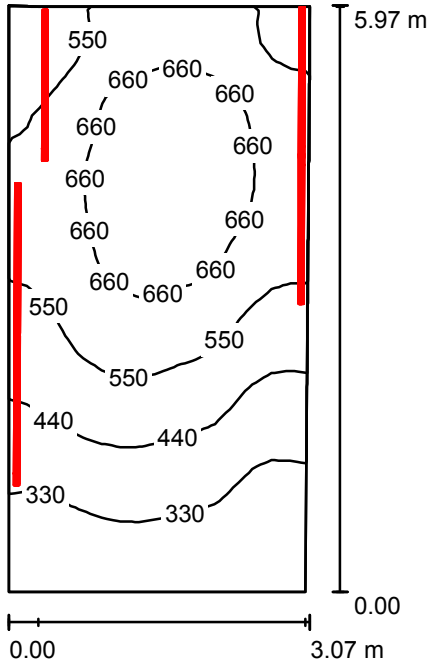




Operator
Telephone
Fax
e-Mail

Labaratorija 009 / Summary



Height of Room: 3.000 m, Maintenance factor: 0.80

Values in Lux, Scale 1:77

Surface	ρ [%]	E_{av} [lx]	E_{min} [lx]	E_{max} [lx]	u_0
Workplane	/	518	235	751	0.452
Floor	20	410	223	549	0.544
Ceiling	70	721	130	2898	0.181
Walls (6)	50	432	152	4746	/

Workplane:

Height: 0.750 m
Grid: 16 x 32 Points
Boundary Zone: 0.000 m

Illuminance Quotient (according to LG7): Walls / Working Plane: 0.924, Ceiling / Working Plane: 1.389.

Luminaire Parts List

No.	Pieces	Designation (Correction Factor)	Φ (Luminaire) [lm]	Φ (Lamps) [lm]	P [W]
1	5	Glamox i20 249 OP - 2x49W T5 49W HO (1.000)	5286	8600	103.0
			Total: 26430	Total: 43000	515.0

Specific connected load: $28.40 \text{ W/m}^2 = 5.48 \text{ W/m}^2/100 \text{ lx}$ (Ground area: 18.13 m^2)