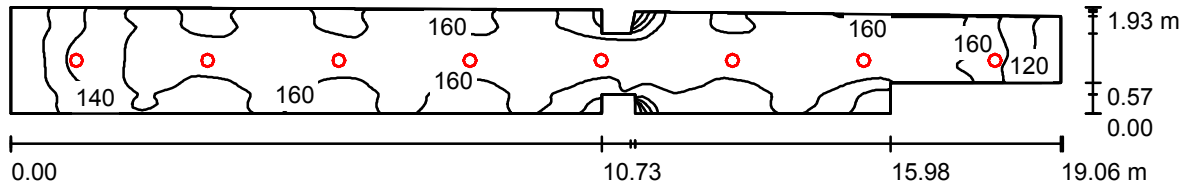


Operator  
Telephone  
Fax  
e-Mail

## Gaitenis 008 / Summary



Height of Room: 2.800 m, Mounting Height: 2.890 m, Maintenance factor: 0.80

Values in Lux, Scale 1:137

Surface	$\rho$ [%]	$E_{av}$ [lx]	$E_{min}$ [lx]	$E_{max}$ [lx]	u0
Workplane	/	156	74	173	0.477
Floor	20	156	77	172	0.495
Ceiling	70	34	24	57	0.701
Walls (14)	50	80	27	757	/

### Workplane:

Height: 0.000 m  
Grid: 32 x 128 Points  
Boundary Zone: 0.000 m

Illuminance Quotient (according to LG7): Walls / Working Plane: 0.514, Ceiling / Working Plane: 0.217.

### Luminaire Parts List

No.	Pieces	Designation (Correction Factor)	$\Phi$ (Luminaire) [lm]	$\Phi$ (Lamps) [lm]	P [W]
1	8	Glamox CASA 23 218 Silver cone reflector - 2x18W TC-D 18 W (1.000)	1464	2400	52.0
			Total: 11714	Total: 19200	416.0

Specific connected load:  $12.48 \text{ W/m}^2 = 8.00 \text{ W/m}^2/100 \text{ lx}$  (Ground area:  $33.33 \text{ m}^2$ )